

# KPG – 8 X 1.5

## CONNECTORS



Dimension in mm	Specification			Color	
<b>Patent Connector Anodized</b>	<b>Loose</b>	<b>Slit</b>	<b>Clip</b>	<b>Gold</b>	<b>Silver</b>
PV 810	•	•	•	•	•
PV 811	•			•	•
PV 818		•		•	•
PV 890		•	•	•	•
<b>Patent Connector Coated</b>	<b>Loose</b>	<b>Slit</b>	<b>Clip</b>	<b>Lead</b>	<b>White</b>
PV 810		•	•	•	•
PV 811		•		•	•
PV 818				•	•
PV 890		•	•	•	•
<b>Poly-connector</b>	<b>Cross</b>	<b>Y-90°</b>	<b>Connection</b>		
8 x 1,5mm	•	•	•		



PV 810



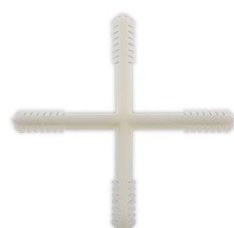
PV 811



PV 818



PV 890



Cross POLY



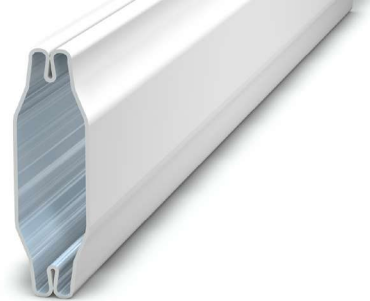
Y-90° POLY



End Piece POLY

# SPROSSE 2000

## CONNECTORS



Dimension in mm	Cross	T	Y 90°	End Piece	End Plug	Cutter	Steel Pins	Disc
1808 A	•			•	•			
1808		•	•	•	•	•	•	•
2608	•	•	•	•	•	•	•	•
4508		•		•	•	•	•	•



Cross POLY



T-Connector



Y 90° POLY



End Piece POLY



End Plug POLY



Cutter-Connector



Steel Pins



Disc POLY

# DUPLEX CONNECTORS



Measurements	Cross	Cross with Reduction Pad	End Piece	Disc	Reduction Pad
9,5 x 15		•	•		•
9,5 x 18	•	•	•	•	
9,5 x 20	•	•	•	•	•
9,5 x 24	•	•	•	•	•
9,5 x 30	•	•	•	•	
11,5 x 18	•	•	•	•	
11,5 x 20	•	•	•	•	•
11,5 x 24	•	•	•	•	•
11,5 x 30	•	•	•	•	•

Custom dimensions available on request



Cross Duplex



End Piece Duplex



Disc Duplex



Reduction Pad