

EXT ENGINEER VIET NAM CO.,LTD

*"Thanks to Japanese technology, we can meet customer's requirements
from trial production to mas production"*

"In addition, single-unit production is accepted as well"



WATANABE TOSHIYUKI

General Director

Email: toshi-watanabe@ex-vn.com

CEO Speech

Vietnam has been being considered a global factory. Based on the vision, EXT ENGINEER VIETNAM CO., LTD was established to specialize in mechanical processing and cutting with a headquarters in Bac Giang Province, northeast of Hanoi. We always perfect and devote ourselves to "manufacturing" products that are smaller, more complex, and more functional to meet all market requirements.

In 2014, we started with the first factory covering an area of 1,500 sqm. In 2019, we opened the second one in the same area. Parts manufactured by our company are used in semiconductors, machinery, heavy construction equipment, automatic equipment, special machines, etc. For orders from small to large scale.

Based on the developed technology, we want EXT to be not only a place for customers to entrust important parts with peace of mind but also a place where customers, partners or manufacturers, and also their families, who are accompanied by EXT, can smile, thereby continuing to make a contribution to the development of "production" and contribute to society.

We constantly go through the mill in manufacturing.

Moreover, we always try our best to bring the Japan-Vietnam relationship closer and closer.

- ▶ **We have our character to gain the love of customers.**
- ▶ **We use the five senses to learn and share with our employees.**
- ▶ **We always improve technology and upgrade management to provide customers with new valuable products.**

COMPANY INFORMATION

Representative: Watanabe Toshiyuki

Year of foundation: 30/08/2013

Into operation: 6/2014

Investment capital: 1,200,000 USD

Investor: EXT Engineer Co., Ltd

Number of employees: 85

Main customer: EXT ENGINEER CO.,LTD,
SIV, FUJIKIN VN,
TECHNO ASSOCIE VN
and other Japanese
companies.

Area: 10,000 m² Including:
- Building 1 with 1,500 m²
- Building 2 with 1,500 m²

Address: Lot V, Dinh Tram IP, Hoang
Ninh Ward, Viet Yen
District, Bac Giang
Province, Vietnam

Contact: Tel: +84-204-3661-529
Fax: +84-204-3661-530
extengineer-vietnam.com

DEVELOPMENT HISTORY

- In 1977, the forerunner of our company was a private foundry factory in Tokoha Town of Japan.
- In 1987, Tokoha Die Cast Co., Ltd was established with an initial capital of 05 million JPY.
- In 1999, to expand the business, the main factory was displaced (to the current location), the Company name was changed to EXT ENGINEER CO., LTD while the charter capital was increased to 10 million JPY.
- On August 30, 2013, EXT Engineer Vietnam Co., Ltd. was established to meet the requirements of expanding production in foreign countries.
- In June 2014, the first factory(1500 sqm) of EXT Engineer Vietnam Co., Ltd officially came into operation.
- In 2018, the Company obtained an ISO9001 certificate.
- In 2019, the Company opened the second factory (1500 sqm).



PRODUCT INFORMATION

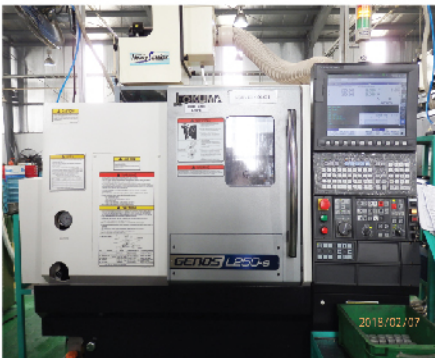
AUTOMATIC LATHING WORKSHOP

- The products are processed and made from long rods.
- The equipment ensures processing from medium to large output.



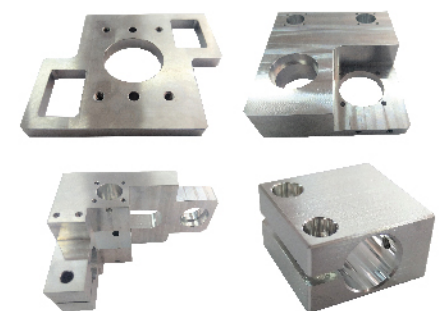
SINGLE LATHING WORKSHOP

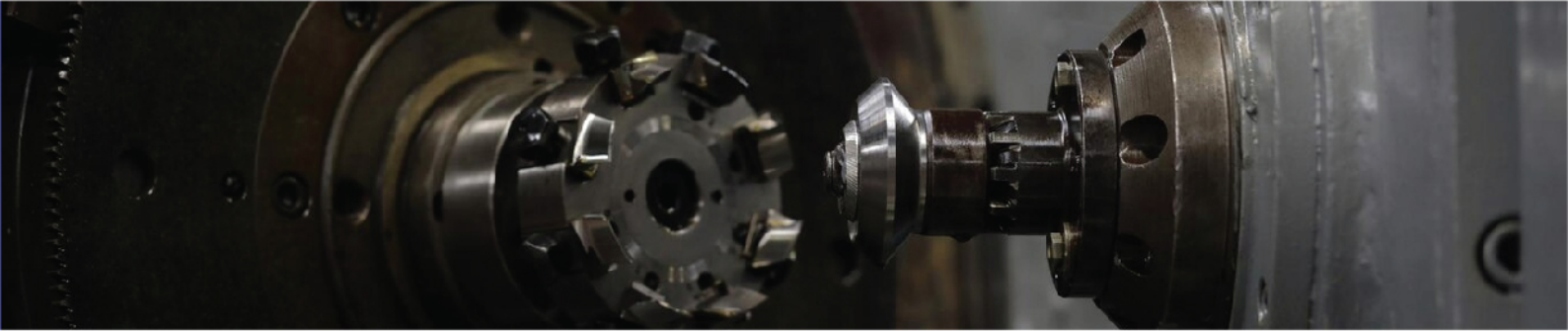
- Products are machined from precut bars or supplied materials.
- The equipment allows us to process from small to medium scale.



MILLING WORKSHOP

- Worked products from metal materials are cut from sheet metal, or materials supplied.
- Product accuracy is enhanced by the use of 4-axis and 5-axis milling machines.





FINISHING WORKSHOP

- When processing by machine, residual shavings and swarfs, even though difficult to see with the naked eye, will be removed from each product one by one.
- In addition, we also meet the requirements of grinding and polishing products.

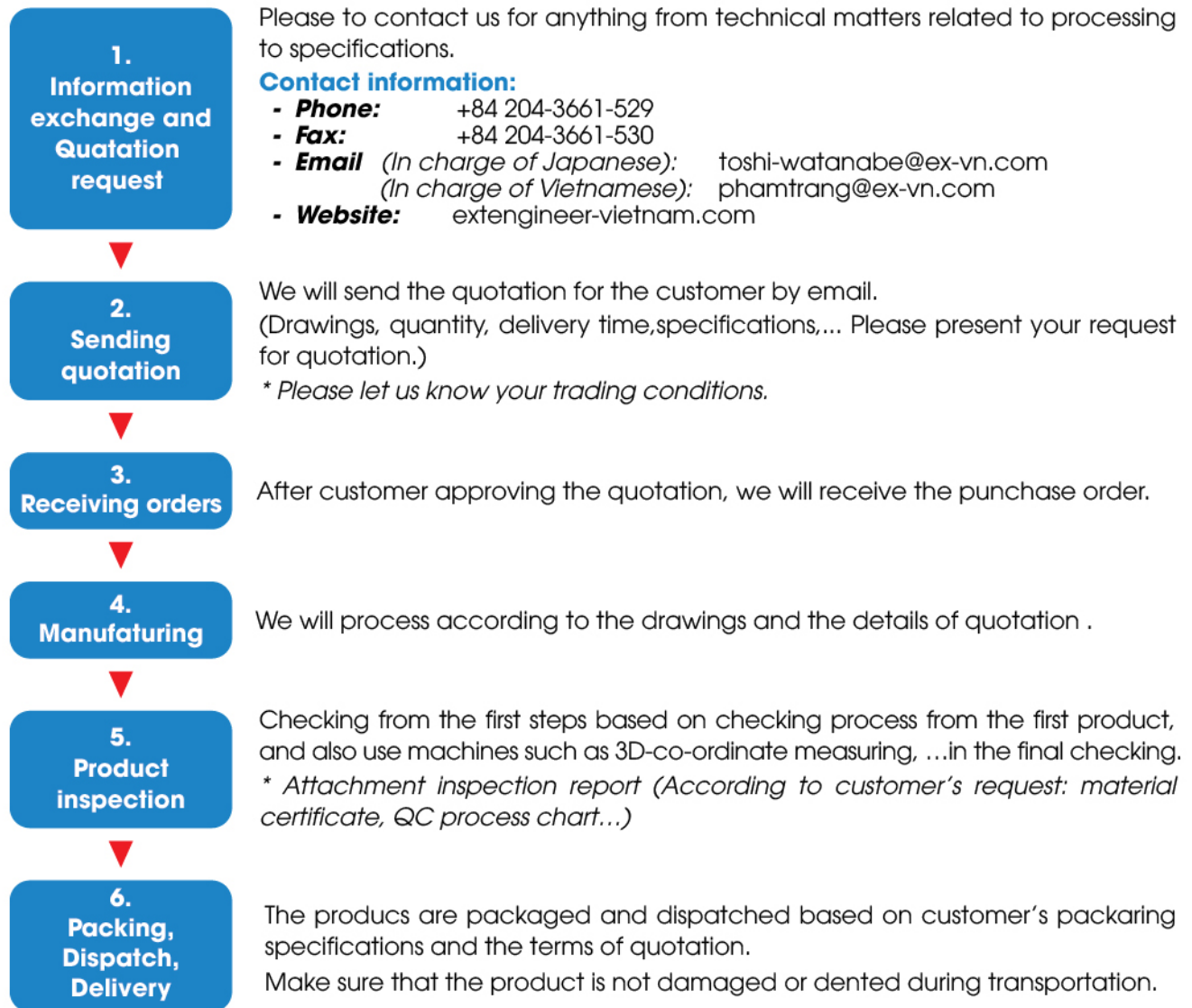


QC WORKSHOP

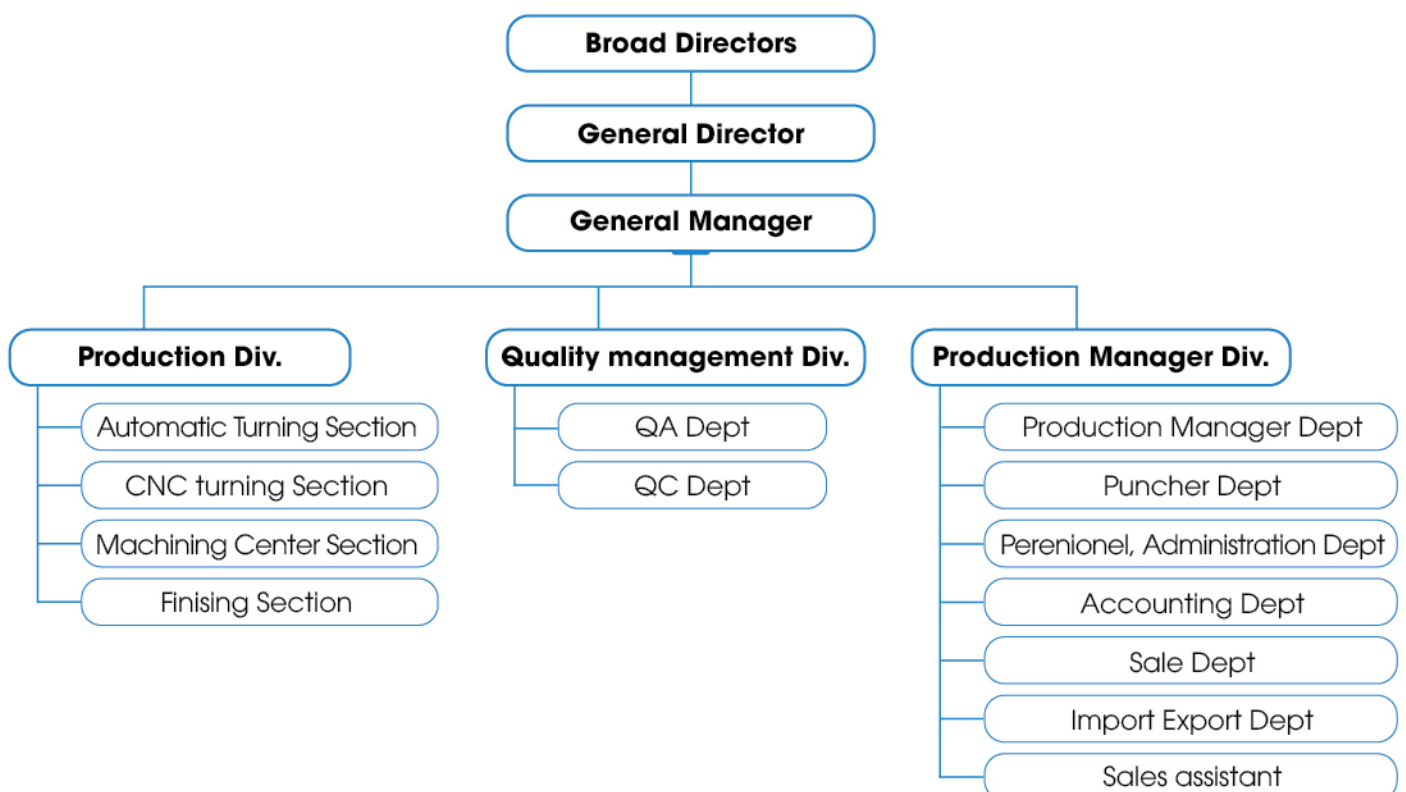
- The quality of the products is managed during each processing stage as well as after processing by both the production and the quality check department. By co-monitoring, we always keep the quality of the factory's products maintained.
- Thus, quality management requirements for customers and sufficient information on product quality are met.



RECIPROCAL PROCESSES FROM QUOTATION TO DELIVERY

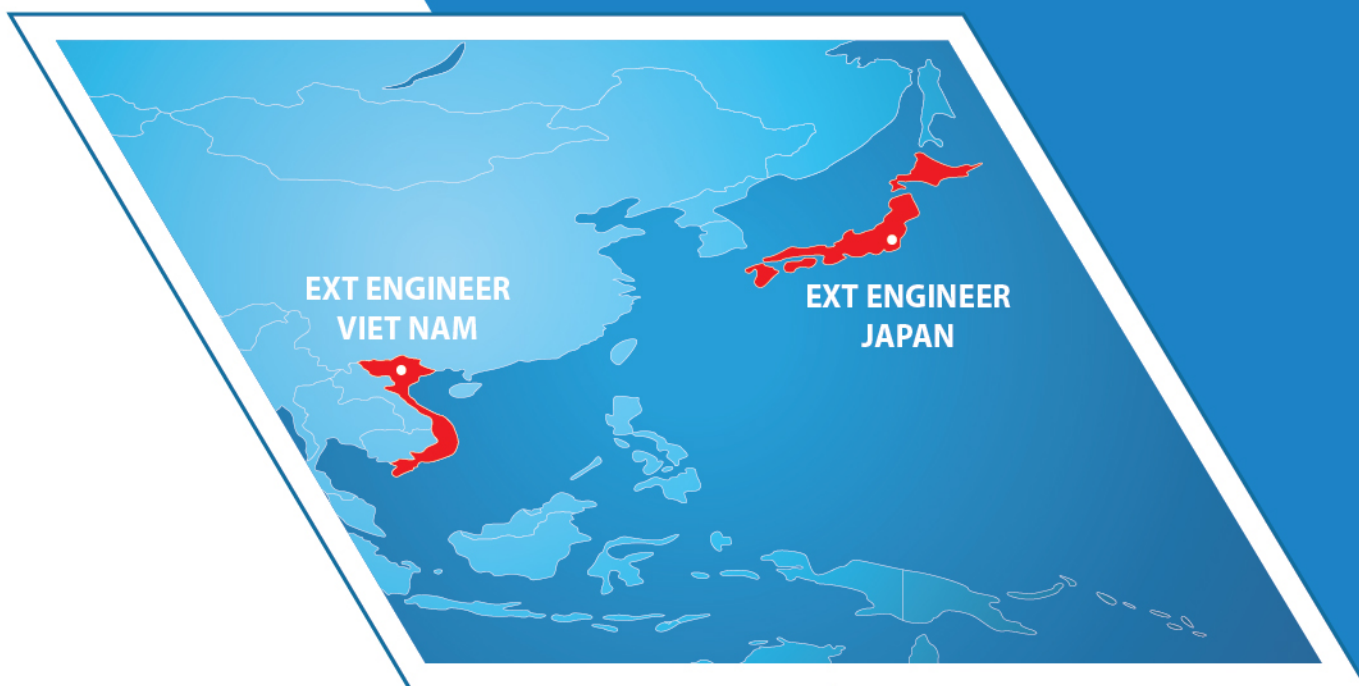


ORGANIZATION CHART



MAIN EQUIPMENT

No.	MANUFACTURER	MODEL	MODEL	Q'TY	UNIT	ORIGIN
1	NC Automatic Combined Lathe	CITIZEN MIYANO	BNC-42C7	5	Machine	Japan
2	NC Automatic Lathe	MIYANO MACHINERY	BND-34S5	1	Machine	Japan
3		MIYANO MACHINERY	BND-34T5	1	Machine	Japan
4		MIYANO MACHINERY	BJ26	1	Machine	Japan
5		CITIZEN MACHINERY	L-20	1	Machine	Japan
6		MIYANO MACHINERY	BND-34C3	2	Machine	Japan
7		TSUGAMI	B205-III	1	Machine	Japan
8		CITIZEN CINCOM	A20-3F7	1	Machine	Japan
9		OKUMA	GENOS L250II-e	1	Machine	Japan
10	NC Combined Lathe	OKUMA	LB-300MY	1	Machine	Japan
11		OKUMA	L200E-M-e	1	Machine	Japan
12	NC Lathe	MIYANO MACHINERY	LX-0	2	Machine	Japan
13		TECHNO WASHINO	LG-6	1	Machine	Japan
14		OKUMA	LB200	1	Machine	Japan
15		MORISEIKI	CL2000A	2	Machine	Japan
16		OKUMA	GENOS L250-e	5	Machine	Japan
17		KITAMURAMACHINE	KNC-20G	2	Machine	Japan
18		OKUMA-HOWA	HJ-28	1	Machine	Japan
19		MIYANO	LX-01	1	Machine	Japan
20		FUJI	TNW-30	1	Machine	Japan
21	Manual Programming Lathe	KUSAKABE, OKK		2	Machine	Japan
22	Manual Bench Lathe	EGURO, HITACHI		10	Machine	Japan
23	Thread Rolling Machine	UNIFY		1	Machine	Taiwan
24	Machine Center 3 axis	OKUMAHOWA	3VAS	1	Machine	Japan
25		BROTHER	SPEEDIO S500X1	2	Machine	Japan
26		BROTHER	TC-S2A	3	Machine	Japan
27		FANUC	T14IF	3	Machine	Japan
28		BROTHER	R450X1	1	Machine	Japan
29		OKUMA GENOS	M560-Ve	1	Machine	Japan
30		MAKINO SEIKI	MSJ25	1	Machine	Japan
31	Machine Center 4 axis	BROTHER	S500X1 High Toque	1	Machine	Japan
32		OKUMA	GENOS M460-VE-e	1	Machine	Japan
33		BROTHER	S700X1	1	Machine	Japan
34	Machine Center 5 axis	BROTHER	M140X1	1	Machine	Japan
35	Horizontal Milling Machine	OKUMA	MB-4000H	1	Machine	Japan
36	Semi-automatic milling	YAMASAKI	YZ-8WR	1	Machine	Japan
37	Double Spindle machine	TAKEDA MACHINERY		1	Machine	Japan
38	Manual Milling Machine	OKK, KANTO		2	Machine	Japan
39	Flat Grinding Machine	PALMARY	JL-3060ATD	1	Machine	Taiwan
40	Centerless grinder	PALMARY	PC-1810S	1	Machine	Taiwan
41	Band Saw	AMADA		2	Machine	Japan
42	Measuring Microscope	MITUTOYO	MF-A505C	1	Machine	Japan
43	Measuring Projector	MITUTOYO	PJ-H3010FT-300	1	Machine	Japan
44	3D-co-ordinate measuring	MITUTOYO	QM-Measure 333	1	Machine	Japan
45	3D-co-ordinate measuring	ACCTETECH	XYZAX MJU NEX5/8/4-C6	1	Machine	Japan
46	Image Measuring Instruments	MITUTOYO	QS250Z	1	Machine	Japan
47	All sorts measurement tool	MITUTOYO		-	Machine	Japan



EXT ENGINEER
VIET NAM

EXT ENGINEER
JAPAN

THANKS TO
EXPLORE US



EXT ENGINEER VIET NAM CO., LTD

WATANABE TOSHIYUKI - General Director

Email: toshi-watanabe@ex-vn.com

PHAM THI TRANG - General Manager

Email: phamtrang@ex-vn.com



LOT V, DINH TRAM IZ, NENH TOWN, VIET YEN, BAC GIANG