



Humanitarian Monthly Briefer

Coordination Team for Emergency Relief (Karenni)

Highlights in this Issue:

- Escalating atrocities across the regions led to widespread displacement, great instability, and insecurity among residents.
- The junta's strategic approach to suppressing dissent has also led to an increase in arbitrary arrests, disappearances of civilians, and forced recruitment.
- Most people suffer from overcrowding, security threats, food insecurity, and limited humanitarian access.

Escalating Atrocities

January was a tough month for the Karenni people. There were active clashes in Moby, Phekhon Township, and Loikaw, with the military junta escalating atrocities across the region. Intense attacks on IDP camps have led to widespread displacement, while indiscriminate airstrikes, bombings, and artillery attacks continue to terrorize the civilian population. In January alone, there were at least 10 incidents in which 14 people were injured and 5 civilians were killed. These attacks on civilian areas have caused great instability and fear among residents of the Karenni and Phekhon regions.



A damaged shelter after an airstrike.

Key Numbers

- During the four-year crisis, **542** Karenni civilian deaths were reported.
- Since February 2021, **147** civilians have been detained.
- As of January 2025, **1,282** armed clashes were recorded in Karenni and Phekhon townships.

Deepened Instabilities

As part of its strategy to suppress dissent, the junta has forced thousands of Karenni residing outside the Karenni regions to return to their homes. This move is aimed at strengthening the junta's control over their areas and reorganizing the administrative process.



A warning sign alerting of landmines.

While some residents have returned, they face significant challenges, including security risks, landmines, war remnants, and unstable living conditions. Additionally, the junta's announced conscription law has led to a rise in arbitrary arrests, civilian disappearances, and forced recruitment, even in neighboring regions where displaced Karenni people have sought refuge. Ethnic discrimination and rights violations against National identity holders from Karenni State have also intensified, both within and outside their homeland.

Hardships on Overcrowded Land

Chaos and instability have forced thousands of displaced people to seek refuge in the remote regions of Karenni. Over time, these areas have become overpopulated, leading to numerous challenges. Security threats remain the primary concern for the people residing in these overcrowded regions. Artillery attacks and airstrikes have devastated some communities causing repeated displacement. Food insecurity, rising commodity prices, severe security risks, disrupted communications, limited humanitarian access, and inadequate health systems have further worsened the well-being of displaced individuals.



Relocation of new arrivals from Phekhon.

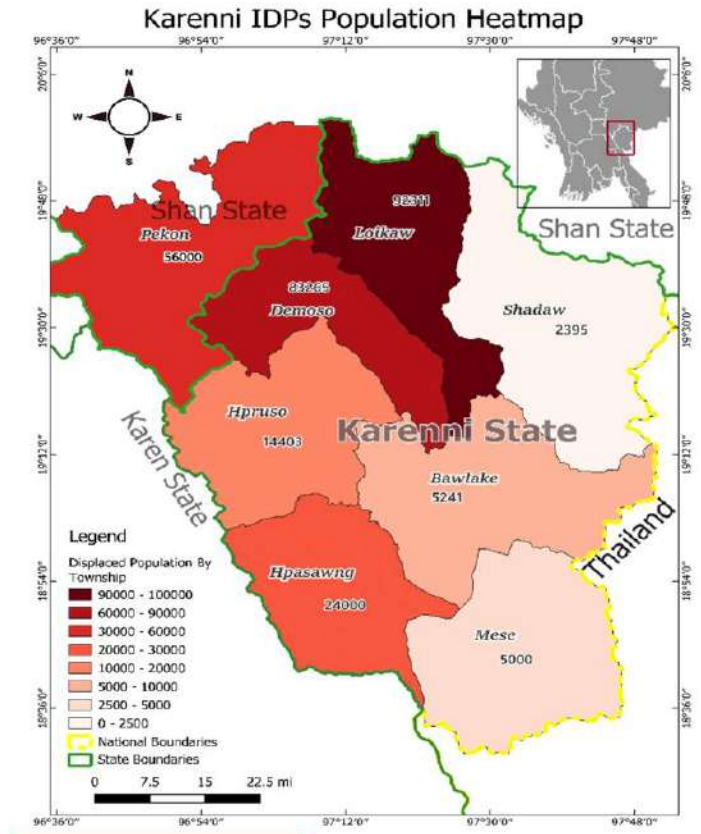
Needs:

- **Urgent Needs:** Food, shelter, and medicine for existing and new IDPs
- **Healthcare and WASH:** Medical supplies, Water, Sanitation, and Hygiene for existing and new IDPs camps
- **Livelihood:** small-scale business, agriculture, handicraft

Call for Action

1. International communities should support cross-border humanitarian assistance for displaced populations
2. International communities should actively engage with local humanitarian groups to implement sustainable humanitarian relief
3. More Karenni should actively participate in the resistance movement and advocate for the plight of Karenni people to international communities

The junta's relentless use of airstrikes, drones, and artillery against civilian areas has intensified the suffering. Both host communities and IDPs are suffering similar hardships and struggling to survive in these dire conditions.



How can you help?

- Spread the message widely
- Participate by donation and volunteer services
- Contact us on how to donate

About us

CTER was formed in March 2021 to respond to humanitarian needs triggered by Myanmar military coup in 2021. CTER provides humanitarian assistance including through cross-border for IDPs throughout Karenni State. CTER partners with local CBOs to distribute food, shelter, and medicines to the IDPs. CTER engages with Karenni diasporas and conducts advocacy and fund raising for Karenni IDPs.

Contact -

Email: cterkarenniinfo@gmail.com

Facebook: @CTER-Karenni

YouTube: <https://www.youtube.com/@CTER-Karenni>