



BAHNHOF

LANGUAGE TRAINING CENTER

CEFR German **Language Placement Test**



Placement Test for German Language Proficiency and Its Importance

In an increasingly interconnected world, proficiency in languages is a crucial skill. Here we dive into the significance of the German Language Placement Test, exploring how it evaluates language aptitude and guides learners to appropriate skill levels. We will discuss the test's structure, its benefits for learners and educational institutions, and its role in fostering effective communication and cultural understanding.

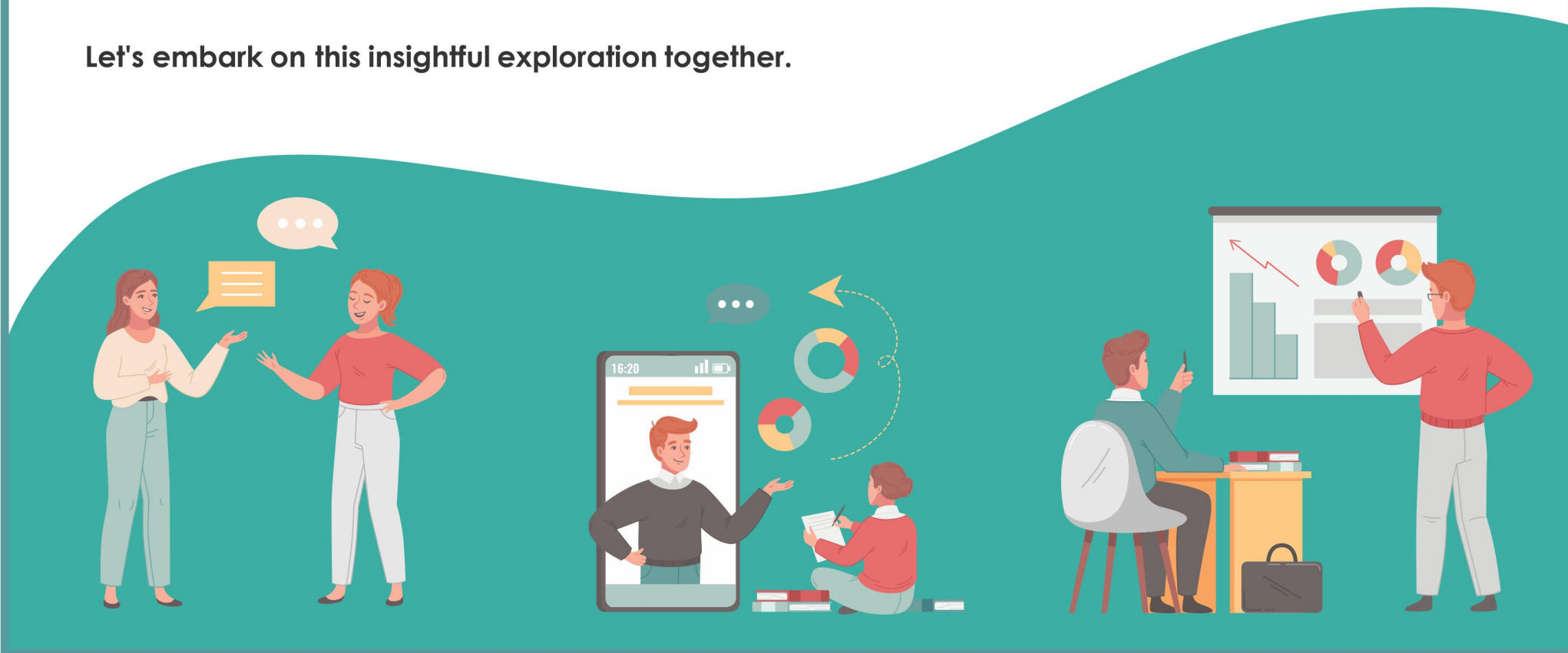


BAHNHOF

LANGUAGE TRAINING CENTER

We uncover the key aspects of this assessment and its impact on language learning journeys.

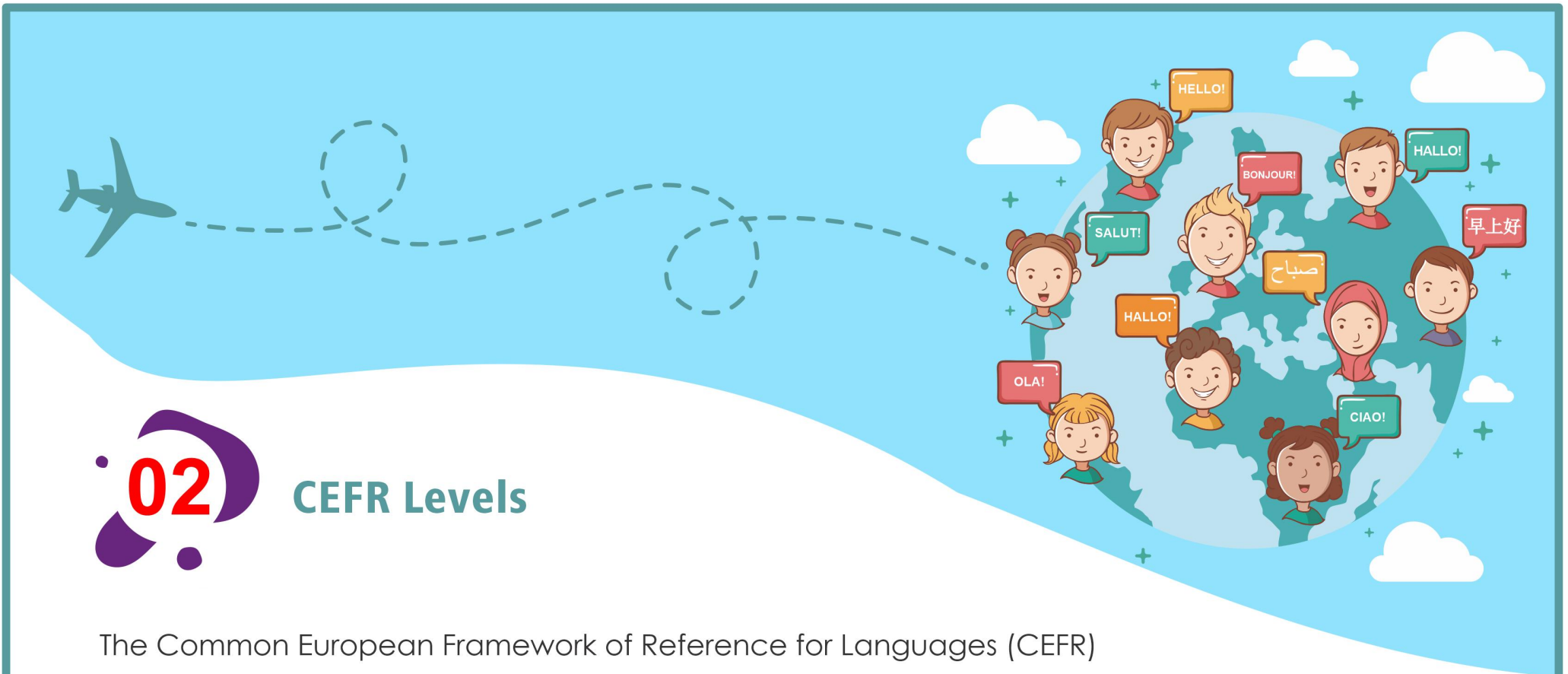
Let's embark on this insightful exploration together.





CEFR Levels

The Common European Framework of Reference for Languages (CEFR) is a widely recognized framework used to describe language proficiency levels. It provides a standardized way to assess and communicate a person's ability to use a language, including their skills in speaking, listening, reading, and writing. The CEFR consists of six main levels, such as A1, A2, B1, B2, C1 and C2. We will concentrate here on A1, A2, B1 and B2 levels



A1 – Beginner

- Breakthrough or beginner stage.
- Basic communication skills for simple and everyday situations.

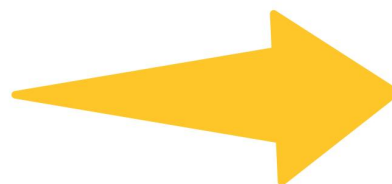
A2 – Elementary

- Limited yet functional communication in familiar contexts.
- Can handle simple tasks and express basic needs.

A1 Course



A2 Course



B1 – Intermediate

- Can engage in more complex conversations on familiar topics.
- Understands main points of clear, standard texts.

B1 Course



B2 – Upper Intermediate

- Can express opinions and ideas on a wide range of topics.
- Understands more nuanced language and can interact with native speakers.

B2 Course



**The CEFR framework is used for language learning, assessment,
and curriculum design across Europe and beyond.**



**It helps learners and educators set clear goals, track progress, and
communicate their language abilities accurately to others.**



Why Take Placement Test in BahnhofPH ?

Accurate language placement plays a pivotal role in ensuring effective language learning. Here's why it's crucial:

Tailored Challenge

Proper placement provides the right level of challenge, keeping learners engaged and motivated.

Efficient Progress

Accurate placement avoids unnecessary repetition, enabling faster skill development.

Confidence Boost

Starting at the right level builds confidence for tackling more advanced language tasks.



Effective Communication

Learners develop practical language skills that aid meaningful communication.

Resource Optimization

Proper placement optimizes time and learning resources.

Strong Foundation

Accurate placement creates a sturdy base for mastering higher-level concepts.

Realistic Goals

Learners set achievable goals, fostering a sense of accomplishment.

Supportive Environment

Accurate placement enhances the overall learning journey with tailored support.





Structure and Content of Placement Test

The test encompasses a holistic evaluation of language proficiency, including all four essential skills: listening, reading, writing, and speaking. These aspects are thoughtfully integrated into a cohesive test format that mirrors real-life language use.

Listening



Candidates will engage with audio materials that reflect everyday scenarios. This assesses their ability to comprehend spoken language, ranging from basic dialogues to more complex discussions.



Reading

The reading component involves comprehending various text types, assessing vocabulary knowledge, and understanding the main ideas and details within the context.

Writing

Candidates will showcase their written expression skills through tasks that require generating coherent responses, demonstrating grammatical accuracy, and effectively conveying ideas.



Speaking

The speaking evaluation goes beyond the test environment, involving real-life conversations with an assessor. This provides a dynamic assessment of spoken language skills, including pronunciation, fluency, and the ability to engage in meaningful dialogue.



This integrated approach ensures a comprehensive evaluation, enabling candidates to demonstrate their language proficiency across diverse contexts and activities.



Placement Test Guide

- **A2 Course:** To enroll in an A2 course, students need to pass **Placement Test A1**.
- **B1 Course:** For admission to a B1 course, students are required to pass **Placement Test A2**.
- **B2 Course:** To join a B2 course, students must pass **Placement Test B1**.





Assessment and Report

The test assessment and scoring process is designed to comprehensively evaluate candidates' language proficiency across various skills and levels. Here's how the assessment works:



For each proficiency level:

A1 level:

The written part of the test lasts for approximately 60 minutes, while the speaking section takes about 15 minutes.

A2 level:

The written part of the test spans around 90 minutes, accompanied by a 15-minute speaking assessment.

B1 level:

The written portion extends to about 90 minutes, with a corresponding 15-minute speaking evaluation.

The scoring system entails the following criteria:



01

READING TEST

A minimum passing score of 60% is required in the reading test.

LISTENING TEST

Similar to the reading test, candidates need to achieve a minimum passing score of 60% in the listening test.



GRAMMAR TEST

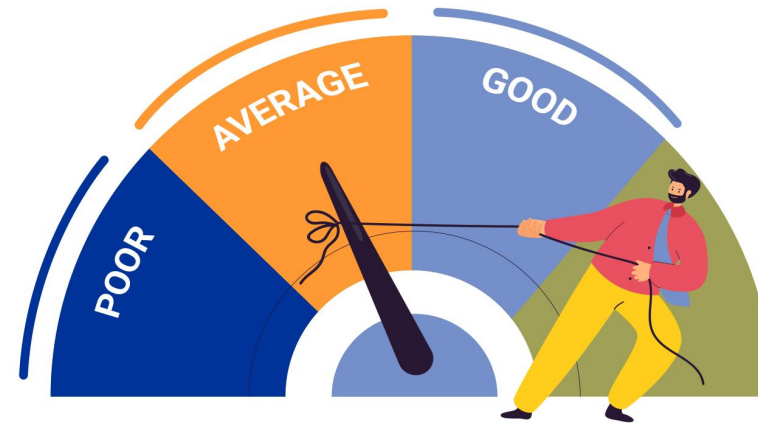
Candidates need to achieve a minimum passing score of 60% in the grammar test.

WRITING EXAM

Evaluation of the written component involves assessing the ability to express oneself in writing, including the correct choice of words and a solid understanding of grammar rules.

ORAL TEST

The oral assessment evaluates candidates' capacity to express themselves verbally, with a focus on accurate word choice and a strong grasp of grammar.



The scoring approach reflects a comprehensive evaluation of candidates' language skills, ranging from written expression and reading comprehension to listening and oral communication. By assessing each component, the test provides a well-rounded measurement of language proficiency across different aspects.

Each test taker receives a personalized report with:



This report provides valuable insights to help you target improvements and refine your language abilities effectively.



BahnhofPH proudly presents comprehensive language program that extends a wealth of advantages, enriching the entire learning experience.

Here are some key advantages:





Structured Progression

Clear sequence of lessons for gradual skill development.



Real-life Application

Practical exercises mirror real-world language use.



Balanced Skills

Covers speaking, listening, reading, and writing for well-rounded proficiency.



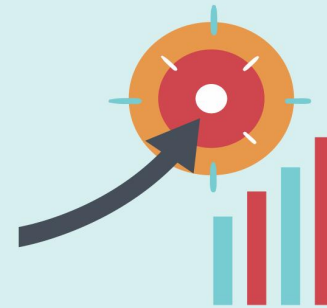
Expert Guidance

Professional instruction and support for effective learning.



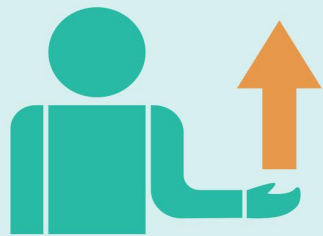
Flexible Learning

In-person and online options to suit different preferences.



Cultural Understanding

Contextual insights enrich language comprehension.



Motivation

Defined goals and milestones keep learners engaged and accountable.



Global Opportunities

Opens doors to international job prospects and cultural connections.

BAHNHOF

LANGUAGE TRAINING CENTER

CONNECT WITH US TODAY

Contact us

Email: info@bahnhof-ph.com

Tel. No.: +63 (2) 5310 2389

Mobile No.: +63 945 340 5262

Visit us

4th Floor, Unit 409, Prestige Tower,
F. Ortigas Jr. Road, Ortigas Center
Pasig, Philippines

Opening hours

Mondays - Fridays

08:00 AM until 05:00 PM

