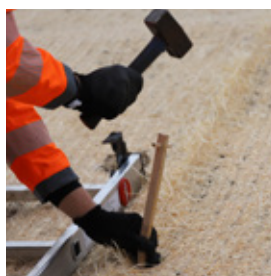




Installation Guidelines

GREENFIX® Covamats™ and Eromats™



...developing tomorrows ideas®

General Applications

- Prepare the soil by raking the top 25mm- 50mm surface layer to a uniform even finish, incorporating where specified pre-seeding fertilizer or soil improver.
- With unseeded mats, where specified, apply at this stage the agreed seed mixture directly to the prepared soil.
- Dig the 150mm "V" trench at the top of the bank. See diagram "A" on the next page of this document.
- Carefully roll out the mats (PAPER SIDE DOWN for seeded mats) ensuring close contact with the prepared ground. Pin the mat in the "V" trench and backfill with soil
- Pin the remaining matting as specified per relevant pinning pattern A, B or C (see back cover). We recommend 3 pins per m² are used for all pre-seeded products (COVAMATS™) for a good soil contact.
- To improve ground contact and seed germination thinly cast soil on matting. 5mm maximum.
- Cover all the outside edges of the Greenfix product with soil.

Ditch & Channel Linings

- Note the steps of General Applications above.
- For the arrangement of the mats refer to the channel installation diagram on the next page of this document and follow the steps below.
- Upstream ends of mats are to be buried in 300mm "V" trench and pinned 150mm apart.
- Roll the mats out along the length of the ditch, beginning in the invert and working up the sides, overlapping the end joints in the direction of flow by at least 100mm, and pin at 150mm centres.
- Proceed by overlapping the length of the next mat up the ditch over the lower mat by at least 100mm and pin according to pinning pattern
- Extend the mats beyond the crest of the channel by approximately 300mm and soil or trench along the entire length.

Irrigation / Fertilizer

- After installing the GREENFIX erosion control blankets, we recommend sufficient irrigation for the first 3-4 weeks to prevent the seeds from drying out during the germination process.
- Poor soils should be fertilized after 3-4 weeks when the vegetation has started by using approx. 50g/m² fertilizer.

Storage

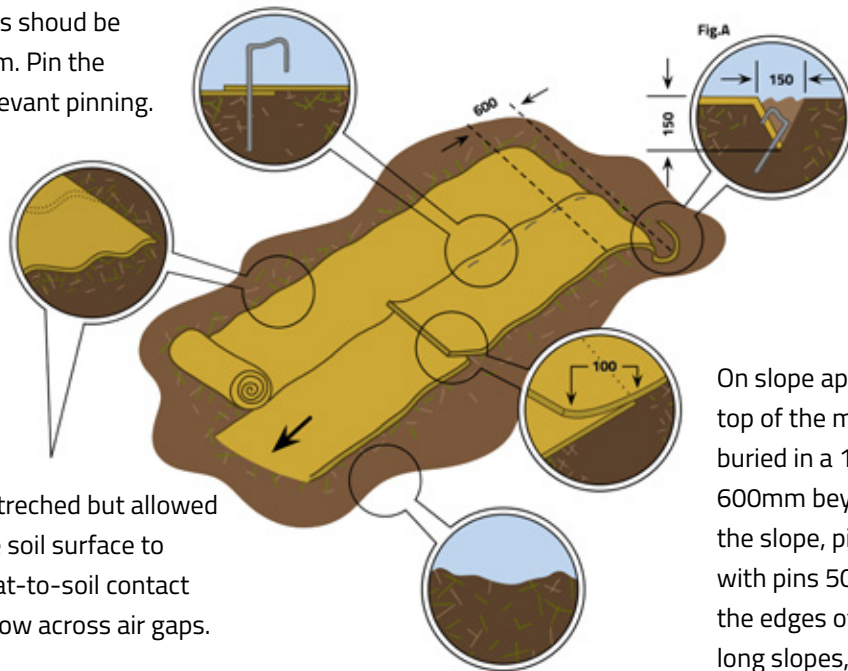
- **Covamat Plus and Eromat** – Covamat Plus and Eromat rolls should be stored off the ground in a cool, dry space and covered. If stored correctly the rolls can remain onsite for approximately 21 days.
- **Covamat Fresh** – Covamat Fresh rolls are required to be installed within 48 hours of delivery. Before installation, these rolls should be stored off the ground in a cool, dry space to prevent germination.

Slope Installation

The edges of the mats should be overlapped by 100mm. Pin the mats down as per relevant pinning.

Mats should not be stretched but allowed to stay loosley on the soil surface to achieve maximum mat-to-soil contact since grass cannot grow across air gaps.

Preparation of the bed, including fertilizer as required* and seed** should be conducted as normal prior to the installation of mats.



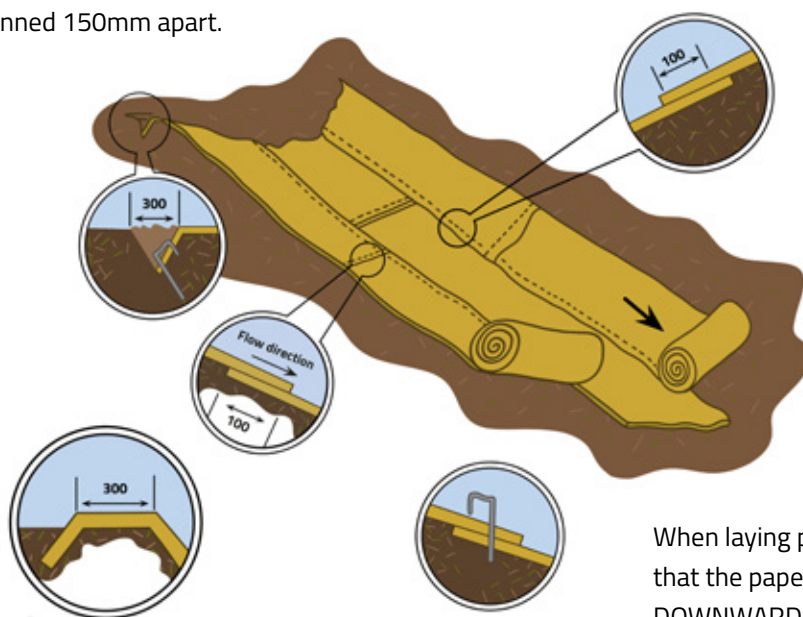
On slope applications, the top of the mats should be buried in a 150mm „V“ ditch 600mm beyond the crest of the slope, pinned into place with pins 500mm apart along the edges of the mats. On long slopes, the ends of the mats should be overlapped 150mm in a „shingle“ effect.

* as indicated by soil test

** for unseeded blankets (EROMATS™)

Channel Installation

Upstream end of mats to be buried in 300mm V ditch pinned 150mm apart.



Overlap rolls by minimum of 100mm.

Cover ends of mat with soil.

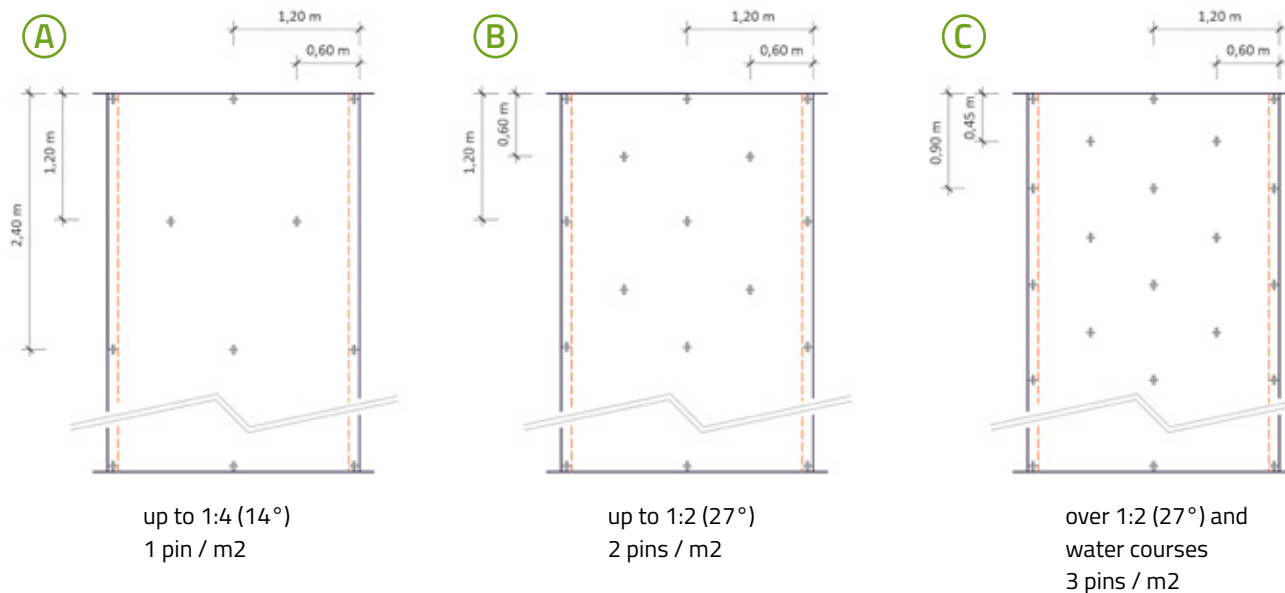
Secure the overlap areas with pins

When laying preseeded mats ensure that the paper backed side faces DOWNWARDS in contact with the soil.

All dimensions in mm.

Pinning Pattern for 2.4m wide rolls

Roll out the mats across the invert, using a complete length of matting from shoulder to shoulder. Trench in the mats as per the slope applications and overlap the edges in a "shingle" effect away from the direction of flow and pin as per relevant pinning pattern



SOILTEC GmbH
Neue Finien 7a
28832 Achim | Germany
Tel.: 04202-7670-0
Fax: 04202-7670-50
E-Mail: geozellen@soiltec.de
www.soiltec-geosystems.de

DISTRIBUTED BY: