

Images guide

KERATIN SMOOTHING TREATMENT

MOOD

PROFESSIONAL HAIR EXPERIENCE

LOVE LISS

Biotechnology

KP3

MOOD

@moodhairofficial  
mood@moodme.it

MOOD

LOVE LISS

KERATIN SMOOTHING TREATMENT

THE PRODUCTS IN THE SMOOTHING SYSTEM

<div>DEEP CLEANSING SHAMPOO</div> <div>pH 7.5/8.5</div> <div>1000 ml</div>	<div>It deeply cleanses and opens the cuticles to better prepare the hair for the straightening treatment (ideal also for preparing hair for other types of treatment).</div>
<div>LOVE LISS KERATIN SMOOTHING MOUSSE</div> <div>pH 1.4/2.0</div> <div>200 ml</div>	<div>It temporarily repositions the keratin chains without breaking the sulphur bridges, allowing the hair to progressively become smooth.</div>

MAINTENANCE AT HOME

<div>KERATIN SHAMPOO</div> <div>400 ml</div>	<div>Silky-effect shampoo free from SLES and salt. With plant keratin and Multi-Mineral Complex. Ideal for maintaining the smoothing treatment result for a long time. For hydrated and easy-to-comb hair.</div>
<div>KERATIN MASK</div> <div>300 ml</div>	<div>Silk-effect mask with plant keratin and Multi-Mineral Complex. Ideal for maintaining the smoothing treatment's result for a long time. For hydrated and easy-to-comb hair.</div>



Salon treatment

Maintenance at home



KP3

Biotechnology

Anti-frizz straightening mousse treatment acts on the hair remodulating its keratin chains, making it smooth and frizz-free. Based on **KP3 BIO-TECHNOLOGY**. **Biotechnological vegan complex:**

1. Prevents heat damage

2. Protects the hair during treatment

3. Repairs hair fiber.

# LOVE LISS

KERATIN SMOOTHING TREATMENT

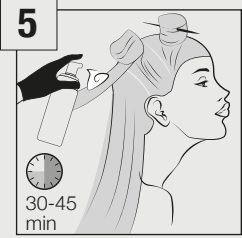
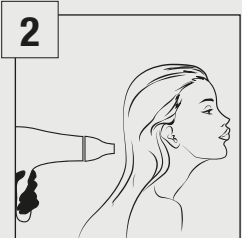
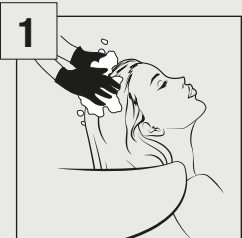
**STEP 1 - Head wash**  
Apply **Mood Deep Cleansing Shampoo** onto wet hair. Massage thoroughly until a homogeneous foam is obtained. Rinse and repeat.  
Leave the second shampoo on for a few minutes, then rinse. Do not use conditioner or mask

**STEP 2 - Workstation**  
Dry hair completely, without combing it. Don't use the brush in this step.

**STEP 3**  
Divide the hair into 4/6 sections.

**STEP 4 - Application**  
Wear gloves. Start from the back area. Shake the **Mood Love Liss Keratin Smoothing Mousse** bottle before use. Work in narrow sections starting from the bottom. Apply a sufficient amount of product to saturate the strand, starting 1 cm from the root. With the help of a comb, distribute the mousse evenly over the lengths and tips, making sure the strands are evenly saturated.

**STEP 5**  
Continue in the same way, throughout the hair, working from the lower strands and moving upwards. Leave on for 30/ 45 minutes.  
The application time varies depending on the type of hair and the sensitivity of the structure: hair that is more damaged or treated requires shorter application times.



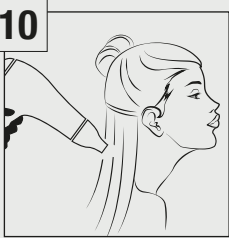
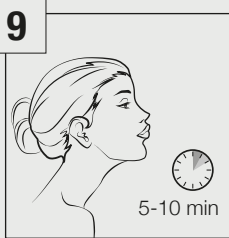
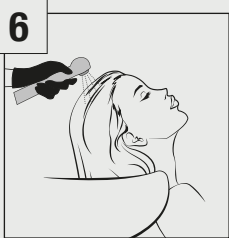
**STEP 6 - Head wash**  
Once the application time is over, rinse the hair for 6-10 seconds.  
Use warm water and remove excess water by dabbing with a towel.

**STEP 7 - Workstation - to flat iron**  
Dry the hair completely, flattening the volume with the help of a brush. Once finished, use the hair straightener to smooth narrow sections of hair, about 1 cm, starting from the back area (nape) and progressing over the entire hairline, from the bottom to the top. For the temperature of the hair straightener and the number of passes, follow the instructions in the table "guide to hair straightener temperature and number of passes".

**STEP 8 - Head wash**  
After using the straightener, let the hair cool for a few minutes. Rinse the hair with lukewarm water.  
Rinse thoroughly until all product residues have been completely eliminated.

**STEP 9**  
After rinsing the hair, apply a generous amount of **Mood Keratin Long Hair Mask** and massage thoroughly. Leave on for 5 to 10 minutes. Rinse with warm water.

**STEP 10 - Workstation**  
Dab and dry with a hairdryer, directing the air jet from top to bottom. Finish the treatment by passing the straightener through the hair again and defining the final style.



# LOVE LISS

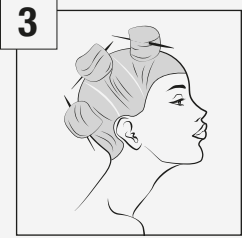
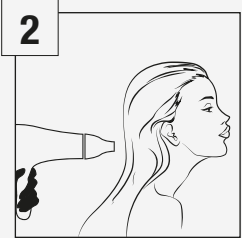
KERATIN SMOOTHING TREATMENT

**STEP 1 - Head wash**  
Apply **Mood Deep Cleansing Shampoo** onto wet hair. Massage thoroughly until a homogeneous foam is obtained. Rinse and repeat.  
Leave the second shampoo on for a few minutes, then rinse. Do not use conditioner or mask.

**STEP 2 - Work station**  
Dry hair completely, without combing it. Don't use the brush in this step.

**STEP 3**  
Divide the hair into 4/6 sections.

**STEP 4**  
Wear gloves. Start from the back area. Shake the **Mood Love Liss Keratin Smoothing Mousse** bottle before use. Work in narrow sections starting from the bottom. Apply a sufficient amount of product to saturate the strand, starting 1 cm from the root.  
with the help of a comb, distribute the mousse evenly over the lengths and tips, making sure the strands are evenly saturated.

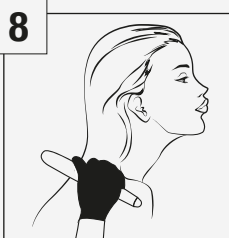
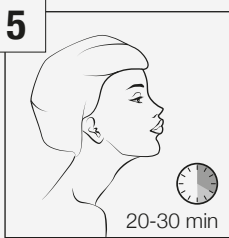


**STEP 5**  
Continue in the same way, throughout the hair, working from the lower strands and moving upwards. Leave on for 30/ 45 minutes.

**STEP 6 - Head wash**  
Once the application time is over, rinse the hair for 6-10 seconds.  
Use warm water and remove excess water by dabbing with a towel.

**STEP 7 - Workstation**  
Dry the hair completely, flattening the volume with the help of a brush.

**STEP 8**  
For the temperature of the hair straightener and the number of passes, follow the instructions in the table "guide To Hair Straightener Temperature And Number Of Passes".



**Note:** this treatment lasts less than the PERFECT SMOOTHNESS METHOD

# LOVE LISS

KERATIN SMOOTHING TREATMENT

## GUIDE TO HAIR STRAIGHTENER TEMPERATURE AND NUMBER OF PASSES

### PERFECT SMOOTHNESS METHOD

Fine, damaged, blonde or lightened hair, natural grey, with 75% highlights, hair dyed with red shades.	TEMPERATURE 160 - 170 °C Number of passes: 7 to 9	TEMPERATURE 320 - 350 °F Number of passes: 7 to 9
Coloured hair, with 50% highlights.	TEMPERATURE 170 - 180 °C Number of passes: 10 to 12	TEMPERATURE 350 - 370 °F Number of passes: 10 to 12
Medium diameter natural hair.	TEMPERATURE 190 - 200 °C Number of passes: 12 to 15	TEMPERATURE 380 - 400 °F Number of passes: 12 to 15
Coarse and resistant natural hair.	TEMPERATURE 200 - 210 °C Number of passes: 15 to 18	TEMPERATURE 400 - 410 °F Number of passes: 15 to 18

**WARNING:** the strand test is essential if hair has been previously treated with straightening products containing thioglycolate, sodium hydroxide or guanidine and whenever the hair appears very damaged and sensitized.

### ANTI-FRIZZ CONTROL METHOD

Fine, damaged, blonde or lightened hair, natural grey, with 75% highlights, hair dyed with red shades.	TEMPERATURE 160 - 170 °C Number of passes: 5 to 7	TEMPERATURE 320 - 350 °F Number of passes: 5 to 7
Coloured hair, with 50% highlights.	TEMPERATURE 170 - 180 °C Number of passes: 5 to 7	TEMPERATURE 350 - 370 °F Number of passes: 5 to 7
Medium diameter natural hair.	TEMPERATURE 190 - 200°C Number of passes: 5 to 9	TEMPERATURE 380 - 400°F Number of passes: 5 to 9
Coarse and resistant natural hair.	TEMPERATURE 200 - 210 °C Number of passes: 5 to 9	TEMPERATURE 400 - 410°F Number of passes: 5 to 9

**WARNING:** the strand test is essential if hair has been previously treated with straightening products containing thioglycolate, sodium hydroxide or guanidine and whenever the hair appears very damaged and sensitized.