

JEEP GLADIATOR DOUBLE CAB



GEN 2 CANOPY WITH RUBBER INSERTED WINDOW



GEN 3 CANOPY WITH FLUSH MOUNTED WINDOW

NOTE: This is a vehicle specific installation guide and cannot be used as a general installation guide for other vehicle models.

FOLLOW INSTRUCTIONS CAREFULLY TO AVOID ANY DAMAGE TO THE VEHICLE OR PRODUCT.

TABLE OF CONTENTS

REQUIRED TOOLS _____	2
OPTIONAL EXTRAS _____	3
PACKING LIST _____	4
UNPACKING YOUR DELIVERY _____	4
Unboxing procedure	
Checking your order	
FITTING KIT CONTENTS _____	5
PREPARING THE VEHICLE AND CANOPY FOR FITMENT _____	6
STEP BY STEP FITTING PROCEDURE _____	7

=====

REQUIRED TOOLS

Use only the tools recommended in this document.



Alen key no.4 & 6



13mm
Spanner



Clean rags/cloths



Sharp box knife



Star/Phillips screwdriver



Socket wrench & 13mm Socket

OPTIONAL EXTRAS



SIDE DOOR WITH WINDOW



SIDE BOX



KITCHEN UNIT



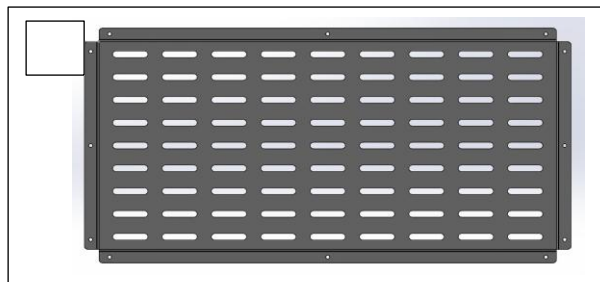
INTERIOR DROPDOWN TABLE BRACKET



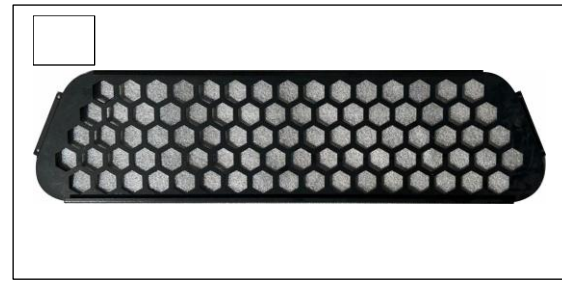
STAINLESS STEEL TABLE



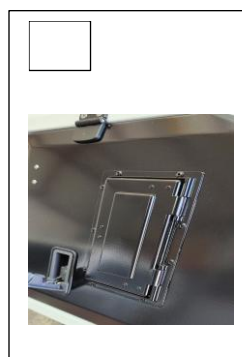
ROOF RACK



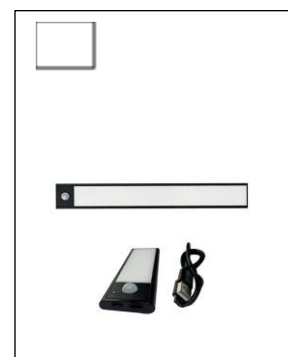
EXTERIOR DOOR MOUNTED MOLLE PLATE



REAR WINDOW SECURITY GRID



AIRVENT



WIRELESS INTERIOR LIGHTS

Helpline: Ciske +27 83 501 2626

PACKING LIST

- The **canopy** is packed on a pallet in an upright position, with its front panel resting on the pallet.
- The **fitting kit** is packed in a separate container which is placed inside the canopy.
- Optional extras, ordered with the canopy, will be fitted onto the canopy or packed in a separate container inside the canopy or it will be shipped as a separate unit. Please refer to the packing and shipping documents.



Canopy Packed for shipment

- All optional extras supplied with the canopy will be marked with a tick mark next to the item on the packing list under “**OPTIONAL EXTRAS**” as noted above.
- A **Separate packing list** will be sent with your canopy.

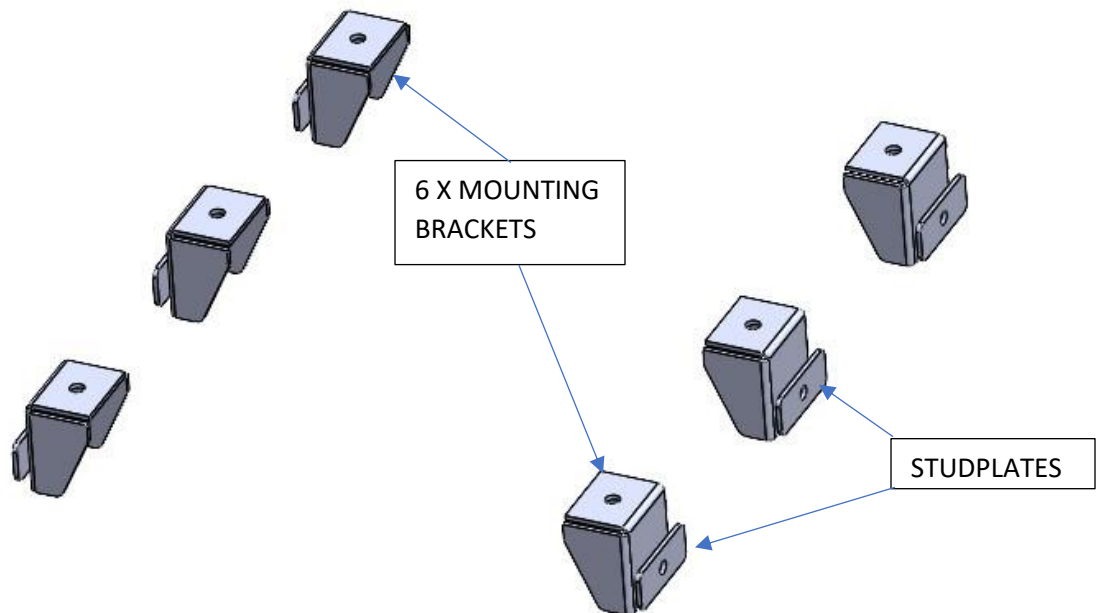
UNPACKING YOUR DELIVERY

- When you receive your canopy, inspect the entire package for damage. Report any damages to your product(s) to your supplier and/or transport company immediately, whichever is applicable.
- Unwrap canopy while in upright position.
- Cross check your packing list with goods received.
- Remove strapping, fitting kit and loose items placed inside the canopy, before canopy is remove from the pallet.



Unwrap canopy

FITTING KIT CONTENTS



6 X Stud plates



24 x 3mm Alu Spacers



6 x M8 x 40 Hex Bolts



18 x M8 Fender washers



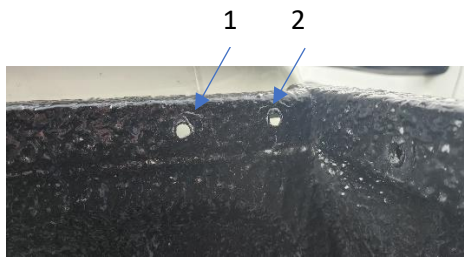
12 x M8 Nylock nuts



2m x 25(w) x 6mm foam tape

PREPARING VEHICLE AND CANOPY FOR FITMENT

- LOAD BIN:** Remove any accessories attached to the vehicle's load bin, such as styling bars, roller shutters or load covers.
Plastic load bin liners do not affect the fitment of canopy. It can be removed or left in place.
Wipe the load edge thoroughly all around.
Seal all the holes where accessories have been removed with Sikaflex or similar sealant [Pic 1 and Pic 2]

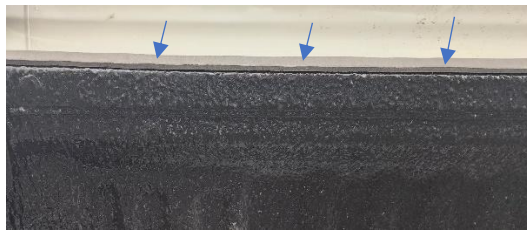


Pic 1



Pic 2

Note that the front edge, [Pic 1], of the load bin is normally lower than the side edge, [Pic 2], of the load bin. Apply on foam rubber (supplied with fitting kit) along the full length of the front edge of the load bin [Pic 3].



Pic 3



Closing the two holes in each corner inside the front edge of the load bin [Pic 4].



Use a thick foam block to cover the hole in each corner inside front edge channel of the load bin.



Pic 4

CANOPY: Make sure all optional extras have been fitted. All extras are factory fitted, if ordered with the canopy.

Remove fitting kit and loose items inside the canopy. Position canopy on a flat clean table or on two stands, wider than the canopy. Unpack fitting kit and make sure content is correct [see list under **FITTING KIT CONTENTS** above].

Fitting kit

Remove fitting kit and loose items.



STEP BY STEP FITTING PROCEDURE

STEP 1



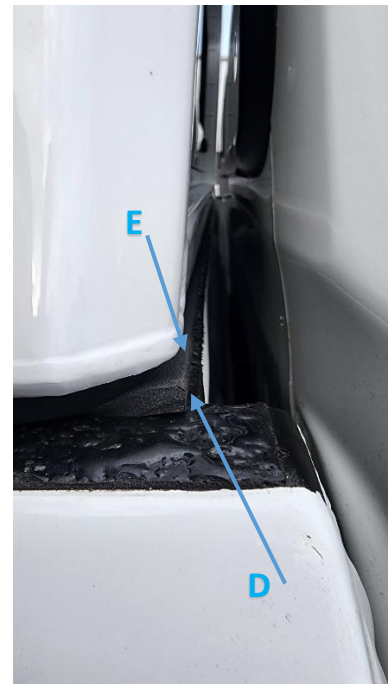
- We recommend that at least two people are used to position the canopy. However, four people is ideal.
- Position one person on each side of the canopy and carry it over the load bin entering from the rear of the load bin.
- Use the below check points in [Pic 5,6,7] to position the canopy on top of the load bin.
- Make sure distance [A] in [Pic 5] is the same on both sides.
- Make sure the rear frame [C] of the canopy is in line where the curve starts [point B, Pic 6] on the top edge of the load bin at the rear [Pic 6].
- Make sure the front bottom frame of the canopy is in line with the front edge [D, Pic 7] of the load bin front panel. [Pic 7].



Pic 5



Pic 6



Pic 7

- If all in Pic 5,6 & 7 are in line, then it is set up correctly.

STEP 2

Tools:



13mm Spanner



Socket wrench & No. 13 socket

Parts:



6 X Stud plates



6 x M8 Fender washers



6 x M8 Nylock nuts

When canopy is in the correct position, as in STEP 1, slide 3 x Stud plates, Pic 8, into the mounting that is located on each side of the load bin, Pic 9. The mounting rails are OE fitted rails and come pre-fitted with the vehicle.

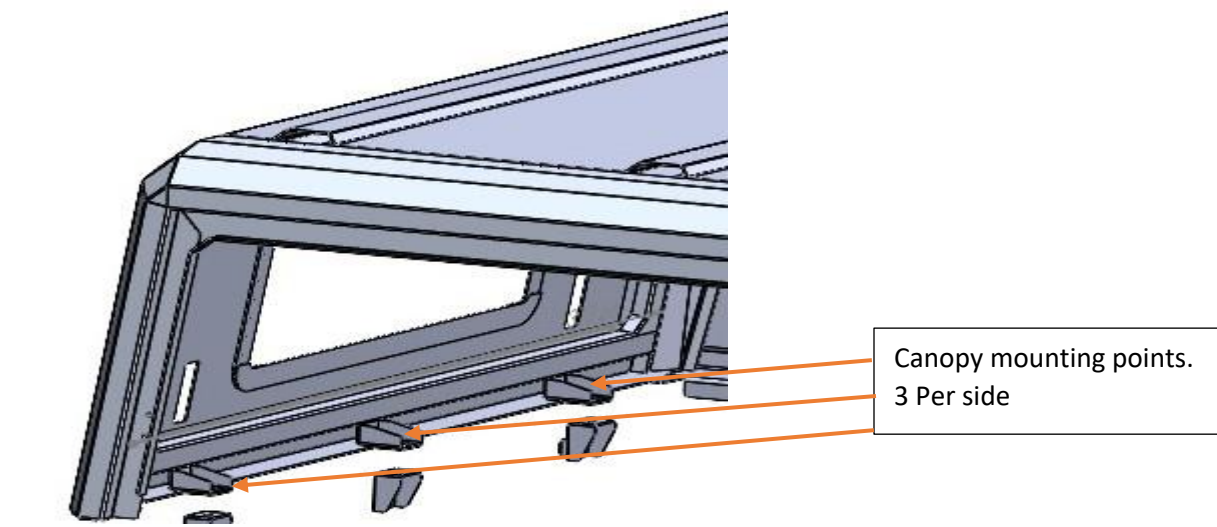


Pic 8



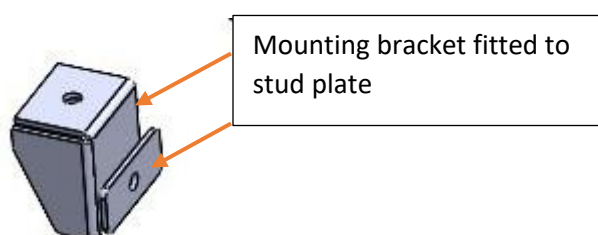
Pic 9

Use 3 x stud plates per side and space it in such a way that it is aligned with the mounting points on the canopy, Pic 10.



Pic 10

Fit 6 x mounting brackets, 3 per side, to stud plates using a M8 washer and M8 nylock nut, Pic 11. Tighten nut in such way that the mounting bracket can still be moved.



Pic 11

STEP 3

Tools:



13mm Spanner



Socket wrench & No. 13 socket

Parts:



6 x M8 x 40 Hex Bolts



12 x M8 Fender washers



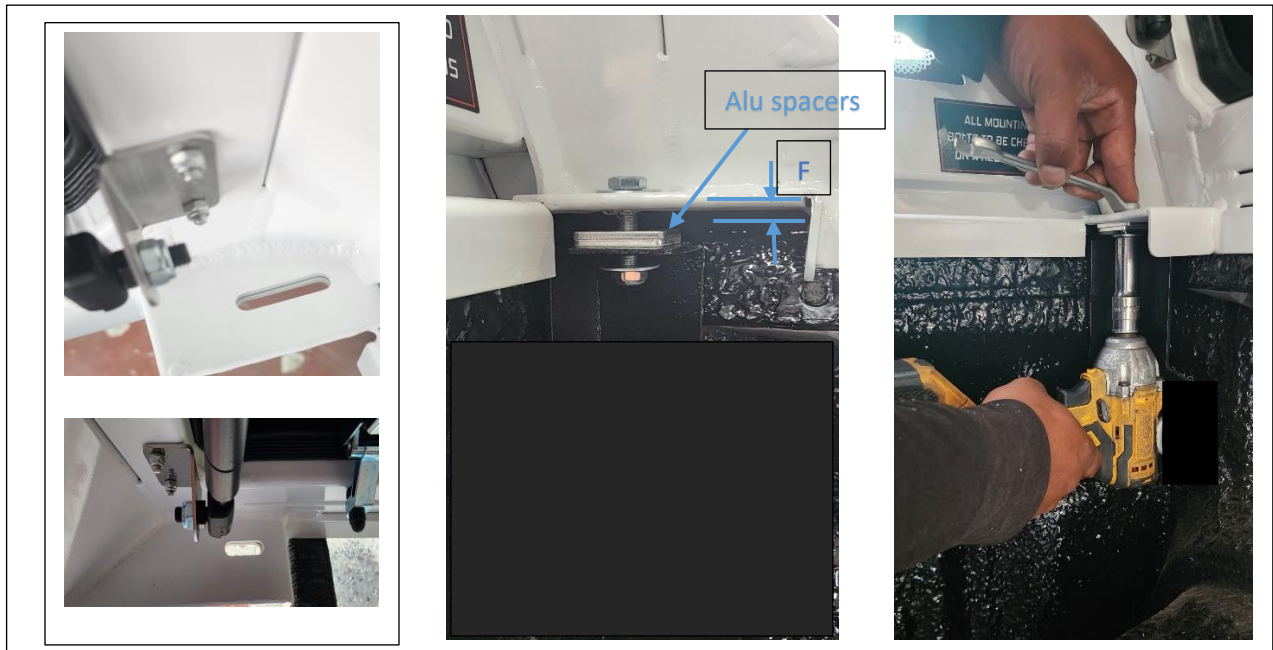
6 x M8 Nylock nuts



3mm Alu Spacers

- When canopy is in the correct position, as in STEP 2, make sure the mounting slots in the bottom panel of the canopy, [Pic12], at the front and the rear are lining up with the holes in the mounting brackets.
- Use an M8 x 40 Hex bolt, 2 x M8 fender washers and an M8 nylock nut and hand tighten each mounting bracket as in [Pic13].

- Insert **Alu spacers** [supplied with fitting kit] between the mounting bracket and the canopy bottom flange as in [Pic13], by sliding it into position from the side.
- Stack the alu spacers on top of each other until the gap between the top alu spacer and the bottom flange of the canopy [F] is between **6 to 8mm**.
- Repeat for all 6 mounting points.

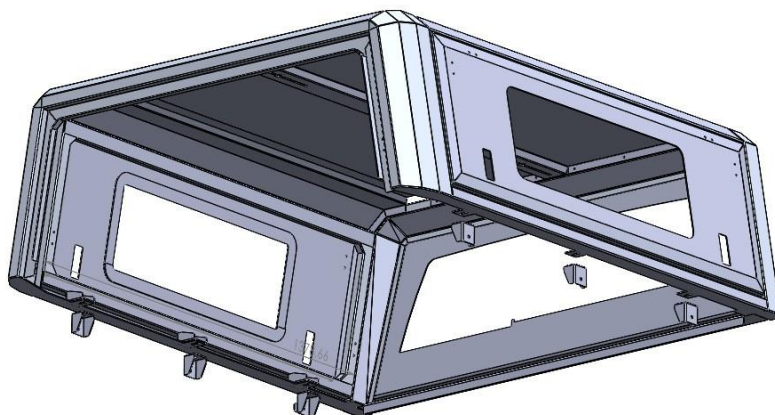


Pic 12

Pic 13

Pic 14

- Tighten the nut on the stud plate, using a socket wrench & 13mm socket to secure the mounting bracket in position, Pic11.
- Tighten mounting bolts by using a 13 spanner and a socket wrench & 13mm socket. Tighten bolt until the top alu spacer pushes against the bottom flange of the canopy. You can also use a drill wrench to tighten the bolts, Pic14.
- Repeat process for all 6 mountings, Pic15.
- Inspect the fitment to make sure the rubber pushes tight onto the top flange of the load bin and make sure the canopy is aligned correctly.



Pic 15 – Mounting bracket
In position.

STEP 4

Tools:



Alen key No.6

- To complete fitment you need to adjust the rear door adjustable flap to make sure that the door seals properly when it is in the closed position.
- Loosen the bolts on adjustable flap, by using a 4mm Alen key [Pic17].



Pic17

- Push the adjustable flap downwards [Pic18] until the rubber seals nicely onto the tailgate. Tighten all the bolts on the adjustable flap again.
- Open and close rear door to make sure rubber seals properly.



Pic18

- Check all the bolts.
- Open and close all doors to make sure it seals properly, adjust the locks if needed.
- Make sure door lock keys are supplied and given to the customer.
- If any optional extras have been supplied with the canopy, make sure it's been fitted properly and that all the bolts are tightened.

FITMENT COMPLETED