

# COLOUR

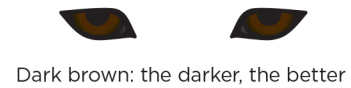
## VISUAL QUICK GUIDE FOR FCI



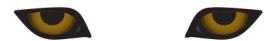
**Colour:** Red fawn, sesame (red fawn hairs with black tips), brindle and white. All the above mentioned colours except white must have « urajiro ». (Urajiro = whitish coat on the sides of the muzzle, on the cheeks, on the underside of jaw, neck, chest, body and tail and on the inside of the legs).

# ALL COLORS

## EYES



Dark brown: the darker, the better



**FAULT:** iris light in colour

## NOSE



Black



Slight and diffuse lack of pigment accepted in white dogs only, but black is always preferred



**DQ:** black mask, markings on white ground

# RED FAWN



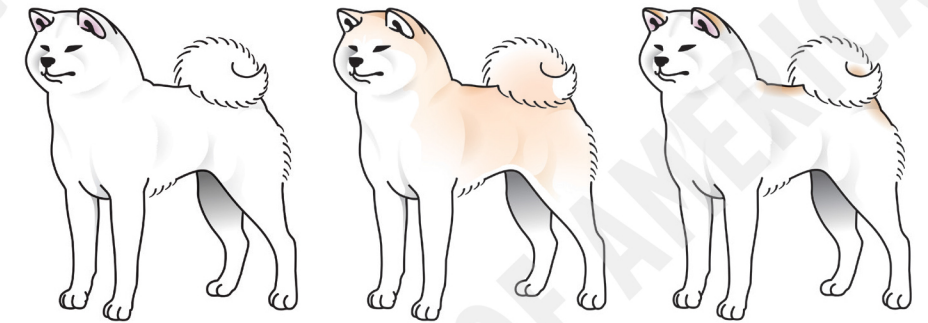
← preferred range →

excessive white

hachware

**DQ:** black mask

# WHITE

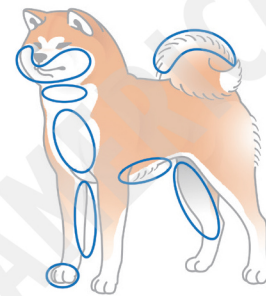


pale red, not white

biscuit color

# SESAME

The inclusion of sesame in the FCI standard may seem misleading since true sesame Akitainu has not been produced in decades. Perhaps it is out of respect to the country of origin whose first Akitainu breed club also lists goma as an acceptable color in its standard for nostalgic reasons.



**OMOTEJIRO & URAJIRO**



**black saddle**



**DQ:** markings on white ground



front



← partial collar →



**full collar**



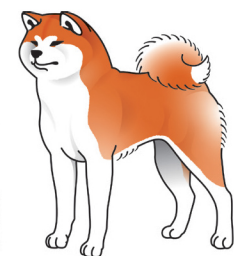
**hachware connected to full collar**



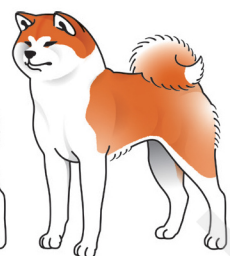
**excessive ticking on legs or muzzle**



preferred



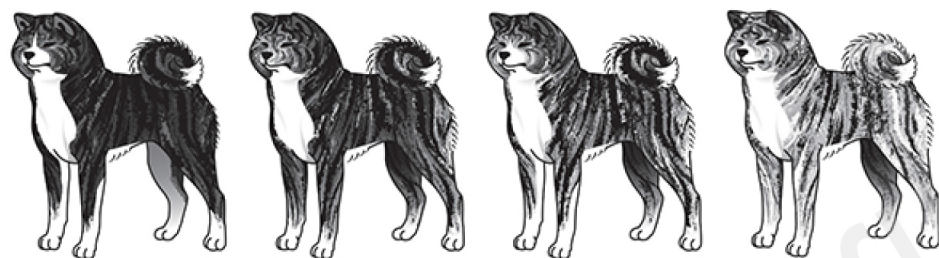
← excessive white on legs & chest →



**pale**



# BRINDLE



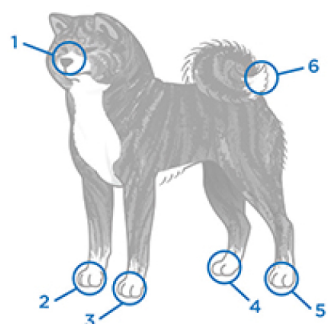
← KUROTORA (black brindle) → SHIMOFURI



← AKATORA (red brindle) → SHIMOFURI



self mask ← blaze → hachware DQ: black mask



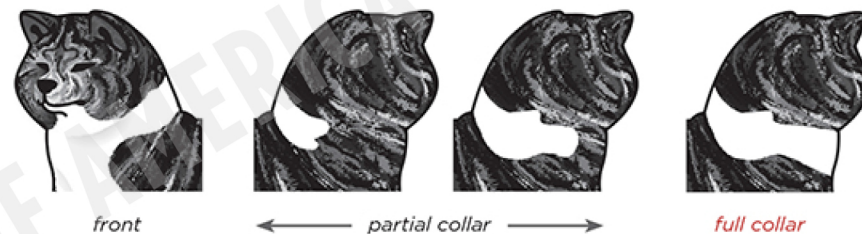
**ROPPAKU**  
(ideal 6 points of white)



**URAJIRO**  
(white underside coat)



DQ: markings on white ground



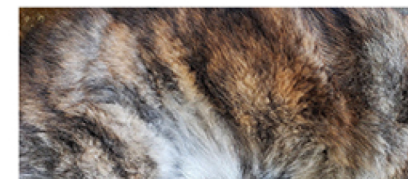
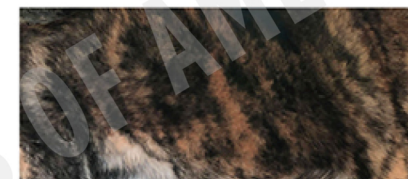
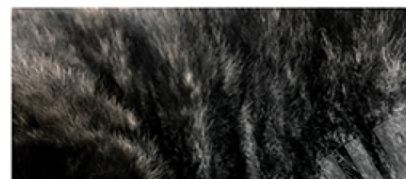
front ← partial collar → full collar



hachware connected to full collar



excessive ticking on legs or muzzle



Color Samples