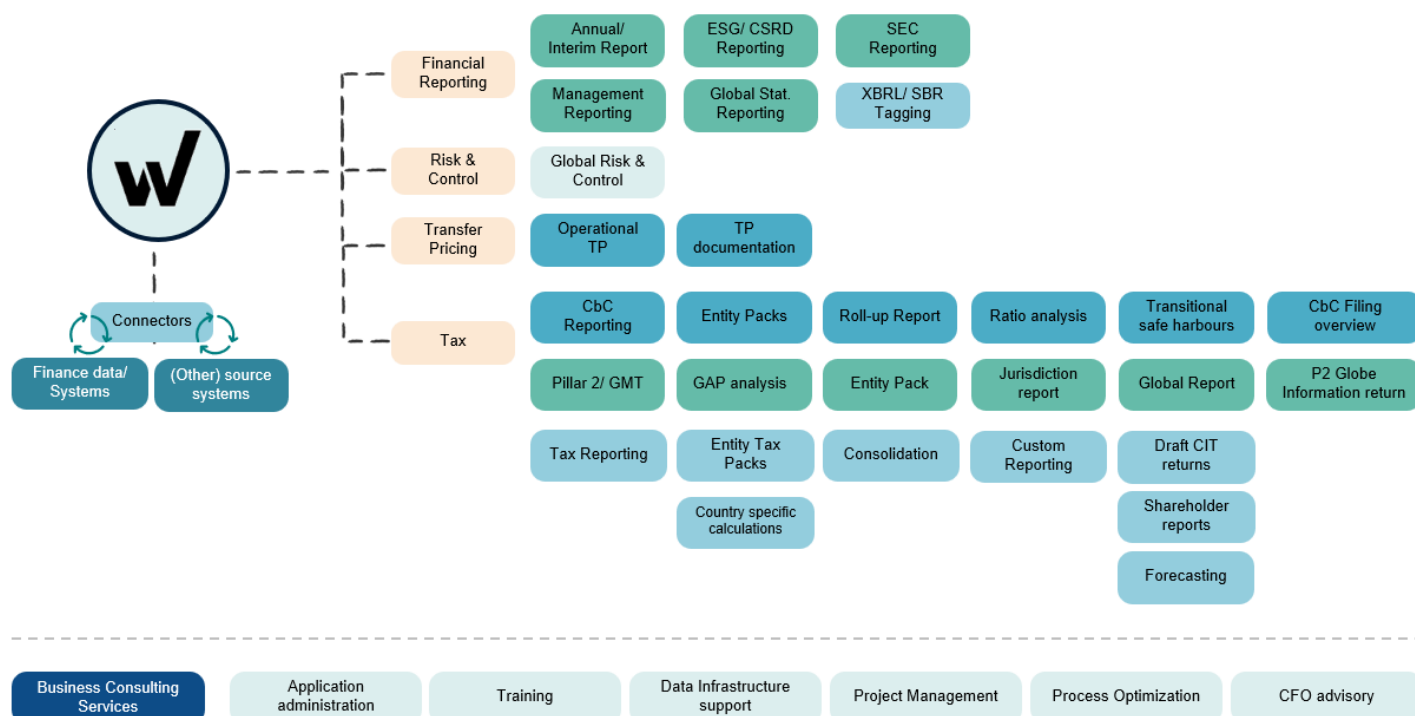


Workiva – Finance & Tax

Addressing your end-to-end Finance and Tax reporting and compliance requirements by integrating the Finance & Tax process and data

- ✓ Start and evolve the work from one single source of truth
- ✓ Real-time reviewing, communication and validation
- ✓ Reduce key man dependency, risk of reputational damage and loss of knowledge
- ✓ Reduce run-through time, eliminate excessive overtime
- ✓ Be prepared for new requirements
- ✓ Gather and re-use financial and non-financial data in a structured and automated way



In the finance and tax landscape, there has been a shift from the use of point solutions to a more long-term strategy which puts the focus on the wider platform play that can accommodate both service lines.

- ✓ Work in a single platform instead of multiple tools
- ✓ Built data legacy that can be used for current and future deliverables
- ✓ Centralize data, documentation and controls
- ✓ Combine processes with controls, audit trail and user management
- ✓ Connect as many deliverables as possible with the same data/ process
- ✓ Create flexibility and agility in anticipation of new requirements
- ✓ Provide earlier access to tax data by finance and the other way around

About ATC – Data, Technology & Knowledge

Integrated compliance & reporting

Together with our customers, we work towards the full finance and tax integration and automation.

Tax Department

| | | |
|----------------------------|------------------|-------------------|
| Tax Accounting & Reporting | Interim services | CIT Compliance |
| Knowledge center | Strategy & PMO | Vendor Selections |

Tax Automation Team

| | | |
|------------------------------|--------------------------------|------|
| Global Tax Reporting | Pillar II (GMT)/ CbC Reporting | DAC6 |
| Global Compliance/ due dates | (operational) TP | CFC |
| | VAT determination & compliance | |

Finance & Automation

| | | |
|--------------|----------------------------|---------------------------|
| Finance labs | FP&A | P&O/ I&S |
| Fintech | Global Statutory Reporting | Annual/ Interim reporting |
| ESG/ CSRD | Management Reporting | Finance transformations |

SMRTR Division

| | | |
|-------------------|---------------|-------|
| Virtual employees | Power Portals | AI/ML |
|-------------------|---------------|-------|

Our Colleagues

Together with our customers, we achieve great things.



Platforms

