

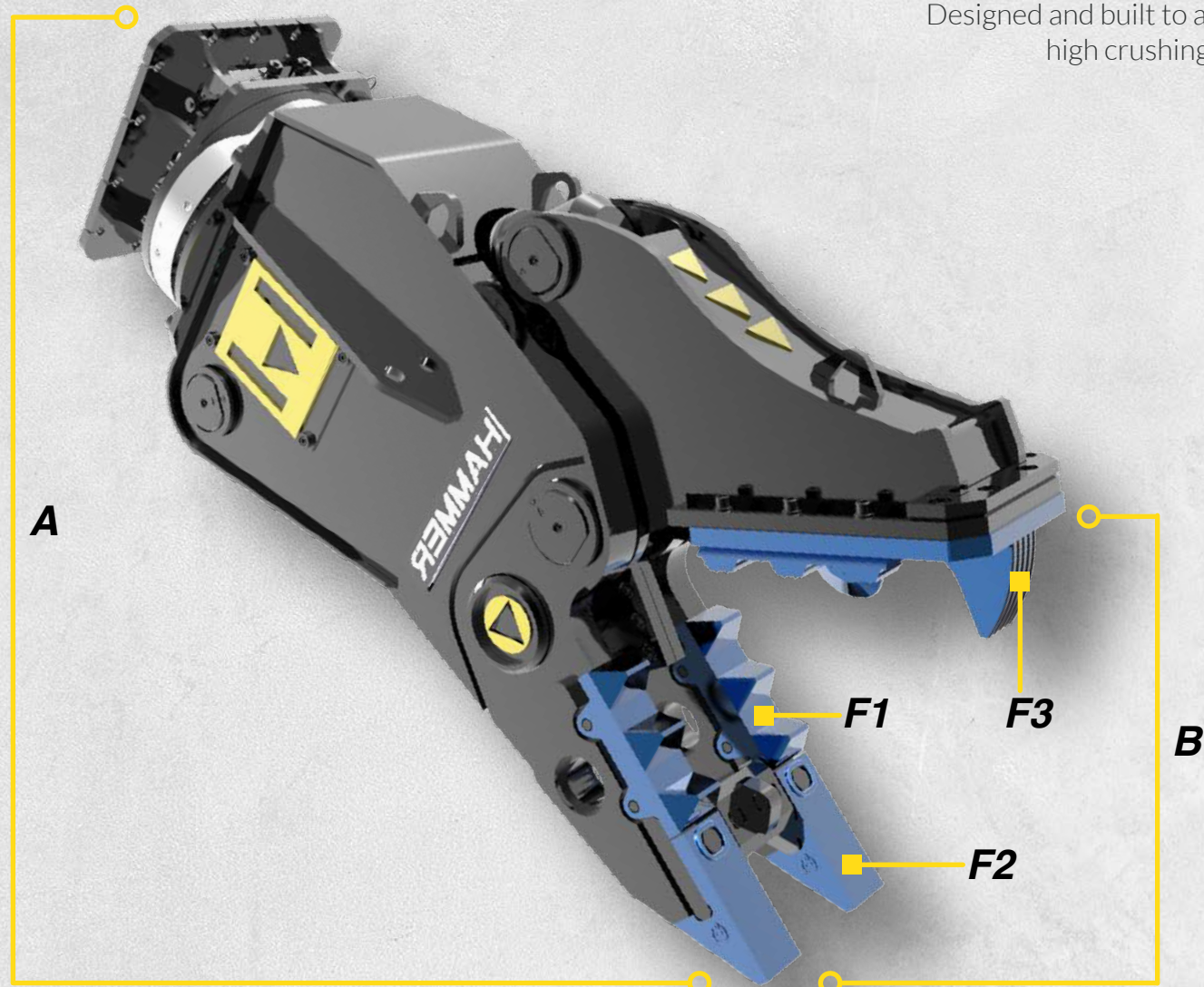
# FRK SERIES

## DEMOLITION ROTATING PULVERIZER

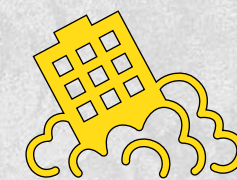
for excavators from 3 to 90 ton

### Design to last!

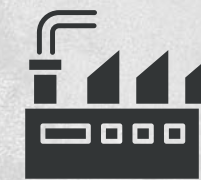
Double motors for an excellent rotation and high power.  
 Integrated "relief" valve to avoid pressure peaks on the rotating motor.  
 Double-turn ball bearing (from model FRK17 up).  
 Designed and built to achieve high crushing force.



Mining & Quarring



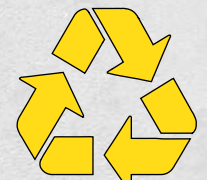
Demolition & Renovation



Metallurgic Industry



Construction



Recycling

Models		FRK03	FRK06	FRK10	FRK13	FRK17	FRK21
Carrier weight	t	3-8	6-13	9-17	12-20	14-23	16-27
Weight	kg	330	570	1000	1400	1650	2000
Excavator oil flow capacity	l/min	30-70	60-100	70-110	110-160	140-200	180-230
Excavator working pressure	bar	280	320	320	350	350	350
360° Rotation	°	360°	360°	360°	360°	360°	360°
Rotation oil flow capacity	l/min	10-25	20-40	20-40	30-60	40-60	40-60
Rotation Pressure	bar	100	100	100	140	140	140
A	mm	1280	1450	1620	1900	2000	2100
B	mm	415	520	605	655	720	780
Steel blade length	mm	120	150	150	160	200	200
F1	t	110	130	150	190	195	220
F2	t	60	65	70	120	120	120
F3	t	35	40	45	53	63	70
Ø Max	mm	28	30	30	40	40	50

Models		FRK26	FRK32	FRK42	FRK60	FRK80
Carrier weight	t	20-32	26-40	32-55	50-70	65-90
Weight	kg	2400	3300	4200	4800	6650
Excavator oil flow capacity	l/min	200-300	250-350	350-450	400-500	450-600
Excavator working pressure	bar	350	350	350	350	350
360° Rotation	°	360°	360°	360°	360°	360°
Rotation oil flow capacity	l/min	40-60	40-60	40-60	40-60	50-70
Rotation Pressure	bar	140	140	140	140	140
A	mm	2300	2500	2700	2965	3300
B	mm	880	1000	1100	1250	1400
Steel blade length	mm	200	200	250	250	250
F1	t	250	370	505	610	735
F2	t	140	225	285	345	415
F3	t	80	100	115	140	170
Ø Max	mm	55	60	65	70	80

THE ROTARY PULVERIZERS OF THE NEW FRK SERIES HAVE BEEN DEVELOPED FOR PRIMARY AND SECONDARY DEMOLITION.

All illustrations and numerical data in this catalog are purely indicative and subject to change at our discretion and without notice. We therefore reserve the right to modify them with a view to improving and continuously developing our product.





# FRK SERIES

## DEMOLITION ROTATING PULVERIZER

for excavators from 3 to 90 ton

### Design to last!

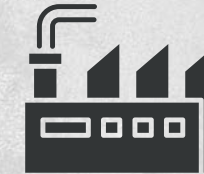
Double motors for an excellent rotation and high power.  
 Integrated "relief" valve to avoid pressure peaks on the rotating motor.  
 Double-turn ball bearing (from model FRK17 up).  
 Designed and built to achieve high crushing force.



Mining & Quarring



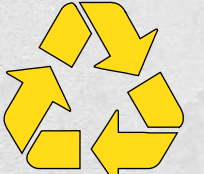
Demolition & Renovation



Metallurgic Industry



Construction

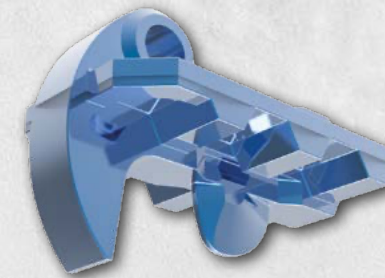


Recycling

**FEEL THE POWER**



PRESSURE UP TO **350 BAR**



ALL THE PARTS THAT MOSTLY UNDERGO WEARING ARE EASILY REPLACEABLE

**\*OPTIONAL SPEED VALVE**  
FROM MODEL FRK17 UP



THE ROTARY PULVERIZERS OF THE NEW FRK SERIES HAVE BEEN DEVELOPED FOR PRIMARY AND SECONDARY DEMOLITION.

All illustrations and numerical data in this catalog are purely indicative and subject to change at our discretion and without notice. We therefore reserve the right to modify them with a view to improving and continuously developing our product.





# FPK SERIES

## STATIC PULVERIZERS

for excavators from 15 to 60 ton

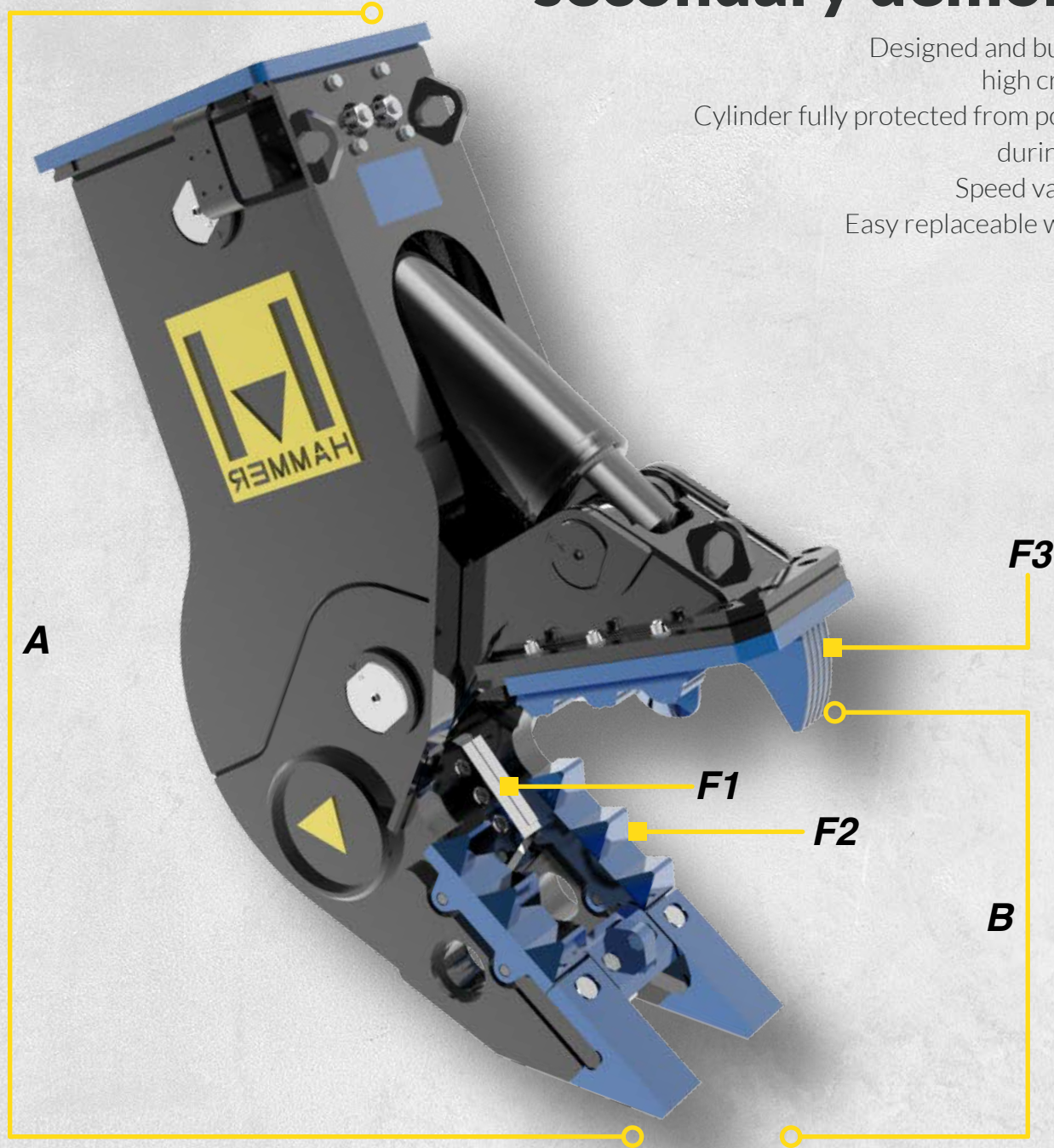
# First quality secondary demolition

Designed and built to achieve high crushing force.

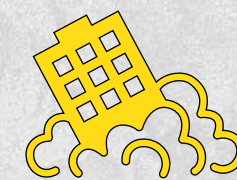
Cylinder fully protected from possible debris during demolition.

Speed valve \*optional.

Easy replaceable wearing parts.



Mining & Quarring



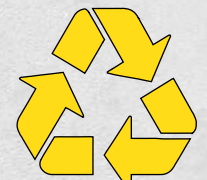
Demolition & Renovation



Metallurgic Industry

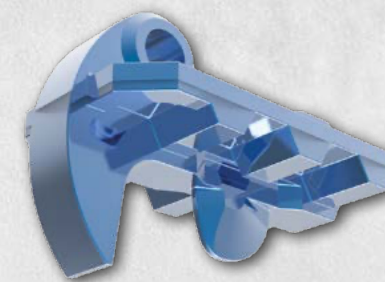


Construction



Recycling

Models		FPK16	FPK21	FPK32	FPK42
Carrier weight	t	15-25	20-35	27-45	35-60
Weight	kg	1600	2000	3000	4000
Excavator oil flow capacity	l/min	140-200	200-250	220-280	260-340
Excavator working pressure	bar	350	350	350	350
A	mm	2090	2230	2450	2750
B	mm	745	840	980	1200
Steel blade length	mm	200	200	300	300
F1	t	240	285	355	415
F2	t	100	125	155	200
F3	t	70	80	95	110
Ø Max	mm	35	45	55	70



ALL THE PARTS THAT MOSTLY UNDERGO WEARING ARE EASILY REPLACEABLE

**\*OPTIONAL SPEED VALVE**



DESIGNED FOR SECONDARY DEMOLITION, HAMMER STATIC PULVERIZERS CAN BOTH BREAK UP REINFORCED CONCRETE STRUCTURES AND SEPARATE THE STEEL.

