

CSF

Carbon Spine Frame



- **Optimal imaging:**
360° Imaging transparency for precise diagnostics and treatment
- **Designed for supine positioning:**
Perfect positioning and access for complex procedures.
- **Lightweight, robust design:**
High-quality materials for easy handling and stability, without floor support
- **Effortless mobility:**
Table can be moved even with the patient positioned

Schaerer Medical is the leading Swiss manufacturer of mobile operating tables and medical accessories for all patient positionings. Since its foundation by Maurice Schaerer, the company has set standards with its innovative spirit and close collaboration with medical experts such as Nobel Prize winner Prof. Theodor Kocher - including the development of one of the first mobile operating tables in 1912, which was awarded the Grand Prix at the Paris World Exhibition.

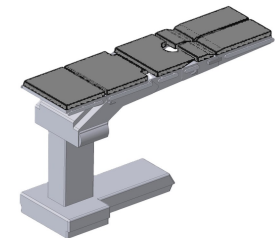
Today, Schaerer Medical stands for premium quality, reliability and durability. The Arcus and Axis product ranges stand for innovation and precision in modern patient positioning. With a global sales and service network, Schaerer Medical is a reliable partner for medical professionals worldwide. Thanks to decades of experience and strict quality standards, Schaerer Medical develops pioneering solutions that meet the increasing demands of modern surgery.



Schaerer Medical AG
Erlenauweg 17
CH-3110 Münsingen
Tel. +41 31 720 22 00
info@schaerermedical.ch
www.schaerermedical.ch



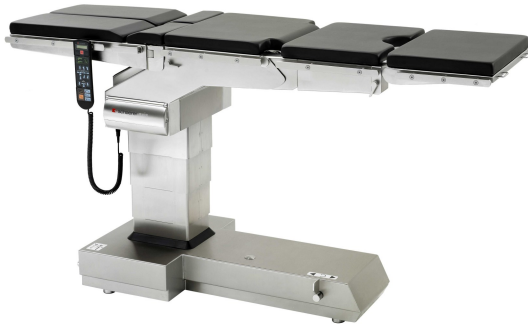
EXCELLENCE THROUGH SUSTAINABLE EXPERIENCE



Since
1892

Swiss Innovation & Precision

AXIS



- **Multiple configurations:**
Optimally adaptable for different surgical positions
- **Compact design:**
Perfectly suited for limited space in the operating room
- **Optimized for Imaging:**
Maximum load capacity when performing imaging examinations
- **High-precision control:**
Exact positioning for demanding procedures

ARCUS



- **Maximum load capacity:**
Ideal for complex procedures and patients weighing up to 500 kg
- **Extended flexibility:**
Extra large column range for maximum flexibility
- **Modern operating concept:**
Intuitive control for efficient processes
- **Premium manufacturing:**
Swiss precision for the highest demands

MTS

Modular Traction System



- **Carbon Construction:**
Enables optimal imaging during surgery
- **Modular design:**
Flexible system for a wide range of positioning
- **Compact Mobility:**
Lightweight and easy to transport, allowing for quick assembly and repositioning in the operating theatre.
- **Maximum Stability:**
Robust construction ensures precise and safe positioning, even without floor support.