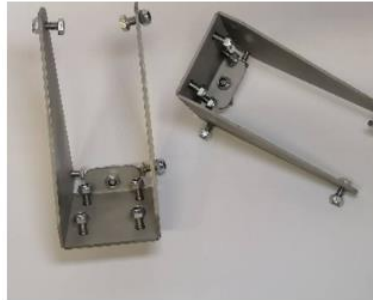




Reg no: 2017/362363/07
SA Vat No: 4700280045
Tax no: 9658182176
Import/Export Reg No: 21798845

Quick Pitch fitment instructions - Awning to Load Bar Brackets



What is in the box?

- 1) 2 x Stainless steel Awning to Load Bar brackets.
- 2) 10 x Hex Head m8x20mm bolts
- 3) 8 x m8x20mm Allan Cap Bolts
- 4) 18 x M8 Lock Nuts

Tools Needed

- 1 x 13mm spanner
- 1 x m5 Allan Key

Method:

1. Remove the brackets from the box.
2. You will see 5 x hex head bolts on each of the brackets, these bolts slide in the load bar slots.
3. 4 x Bolts (2 on each side) slide in on the side of the load bar and the vertical bolt on top.
4. Once the bolts are in position you slide them in the different sides of the load bar.
5. Once the bracket sits flush with the end of the load bar you can use your size "13" spanner to tighten these bolts.
6. The 4 x holes with the Allan cap bolts must face up.
7. The 4 x bolts will be used to mount the awning to the bracket.