

rebo AIRLESS DISPENSER

IN HARMONY WITH NATURE

TIANSHI PACKAGING



6,5 Gt

Greenhouse gases emitted by plastics in 2050

70%

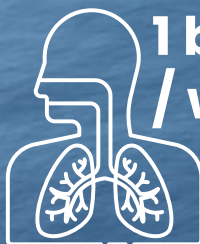
Non-recycled plastic packaging



The total rise in sea level since the early 1990s is over 10 centimeters.

85%

Of marine debris is comprised of plastic.



1 bank card / week

Plastic waste can generate a variety of microplastic particles. Microplastics can enter the human body through inhalation, skin contact, ingestion of food, and so on.



100 million marine animals / year



die as a result of plastic pollution

Approximately 10 million metric tons of plastic enter the oceans each year, which is equivalent to:



2024



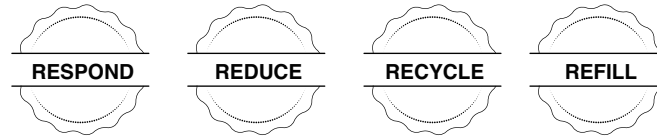
50 kg

Plastic per meter of coastline worldwide.





"THINK MORE, MAKE DIFFERENCE"



In the production of cosmetic products, a wide range of packaging materials and formats are utilized. Consequently, the utilization of environmentally friendly and sustainable packaging represents a significant contribution to environmental conservation. The "rebo" concept embodies the principles of response, reduction, recycling, and reuse, which can be comprehended as follows:

Respond: As consumers become more conscious of the environmental impact of their consumption habits, there is a growing movement towards reducing plastic waste. In response to this trend, our team is dedicated to creating products that are fairer, more resource-efficient, and more natural. This commitment has become an inherent part of our philosophy.

Reduce: Our team is committed to minimizing the use of plastic in our packaging. We prioritize avoiding unnecessary packaging and consistently opt for re-

source-efficient materials, such as eco-friendly glass, as well as sustainable options like paper or bamboo. These practices are crucial to achieving our goal of sustainability and success.

Recycle: Only the refillable component of the rebo series is made from plastic for reasons of hygiene and stability. However, we ensure that these components are produced using 100% recycled materials, specifically PCR plastic. It is important to note that all rebo packaging is 100% recyclable, supporting our commitment to sustainability.

Refill: The rebo products have been thoughtfully designed as a refill system. The concept of interchangeable inner containers and reusable outer packaging serves a meaningful purpose, aiming to minimize packaging waste and contribute to environmental protection.

rebo AIRLESS DISPENSER

100% recyclable
packaging

rebo Paper

15 ML | 30 ML | 50 ML | 100 ML

A synergy of environmental consciousness, captivating presentation, and practical functionality.

Material:

Bottle	<input checked="" type="checkbox"/>	Paper
Cap	<input checked="" type="checkbox"/>	Paper
Pump	<input checked="" type="checkbox"/>	PCR
refill Container	<input checked="" type="checkbox"/>	PCR

Specifications:

15 ml	<input checked="" type="checkbox"/>	44 ø x 102.5 H mm
30 ml	<input checked="" type="checkbox"/>	44 ø x 122 H mm
50 ml	<input checked="" type="checkbox"/>	44 ø x 162 H mm
100 ml	<input checked="" type="checkbox"/>	44 ø x 206 H mm





Why rebo Paper?



The rebo Paper dispenser offers a superior environmentally friendly alternative to plastic or aluminum packaging. Its lid and outer container are crafted from biodegradable paper, ensuring minimal impact on the environment. The small inner container is made from 100% recycled plastic. The entire dispenser is fully recyclable, with a hassle-free twisting mechanism that effortlessly dispenses the contents. Furthermore, the dispenser offers the added convenience of being refillable and reusable.

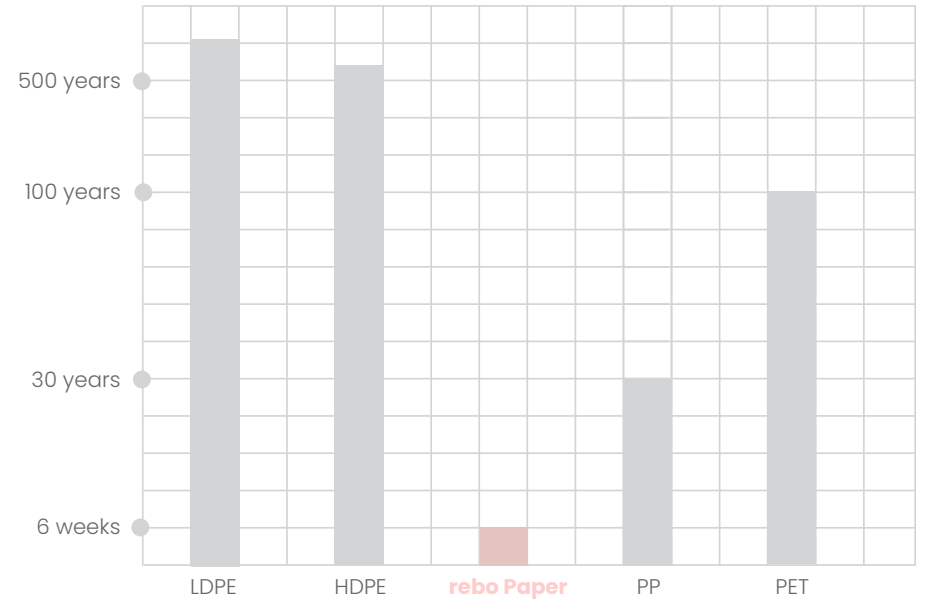


Not only is the dispenser refillable and reusable, but paper also allows for exceptional printing and embellishment options, surpassing plastic or glass. Whether you prefer a crisp, luxurious, matte, glossy, monochromatic, or vibrant design, rebo Paper airless dispensers bring your creative ideas to life effortlessly.



Printing on paper is comparatively easier than on other materials, allowing all product information to be printed on the paper dispenser, eliminating the need for additional external packaging. This not only reduces costs but also minimizes environmental impact. Moreover, the lightproof nature of the paper dispenser makes it ideal for light-sensitive cosmetic products, ensuring product integrity.

The degradation time of rebo Paper & plastics



rebo Gallery

Material:

Silver laminated paper
SF120YS# SILVER



To separate, just **twist** the refill.



rebo Gallery



Material:

Silver laminated paper
YY125BW 5# Fabric texture



Material:
Silver laminated paper
LS128XXD# Star

rebo Gallery



rebo Glass

15 ML | 30 ML | 50 ML

Glass is widely recognized as one of the most environmentally friendly and high-quality materials in the cosmetics industry, primarily due to its infinite recyclability. To enhance its environmental friendliness, we have incorporated refill system made from PCR into our glass airless dispenser.

Material:

Bottle	<input checked="" type="checkbox"/>	Glass
Cap	<input checked="" type="checkbox"/>	PCR
Pump	<input checked="" type="checkbox"/>	PCR
refill Container	<input checked="" type="checkbox"/>	PCR

Specifications:

15 ml	<input checked="" type="checkbox"/>	43.5 ø x 105 H mm
30 ml	<input checked="" type="checkbox"/>	43.5 ø x 132 H mm
50 ml	<input checked="" type="checkbox"/>	43.5 ø x 171 H mm



rebo DISPENSER



© 2023. FOR INTERNAL USE ONLY.

100% recyclable packaging

rebo Glass *Exklusiv*

15 ML | 30 ML | 50 ML

PureVersion: Clear as crystal and more shining

Our high-quality PureVersion glass offers exceptional clarity and a radiant shine, compared to traditional glass. It elevates your products, captivating attention with its mesmerizing allure.

Material:

Bottle	<input checked="" type="checkbox"/>	PureVision Glass
Cap	<input checked="" type="checkbox"/>	PCR
Pump	<input checked="" type="checkbox"/>	PCR
refill Container	<input checked="" type="checkbox"/>	PureVision Glass

Specifications:

15 ml	<input checked="" type="checkbox"/>	45 ø x 86 H mm
30 ml	<input checked="" type="checkbox"/>	45 ø x 118 H mm
50 ml	<input checked="" type="checkbox"/>	45 ø x 157 H mm



rebo Glass *Exklusiv*

A bridge between tradition & modernity

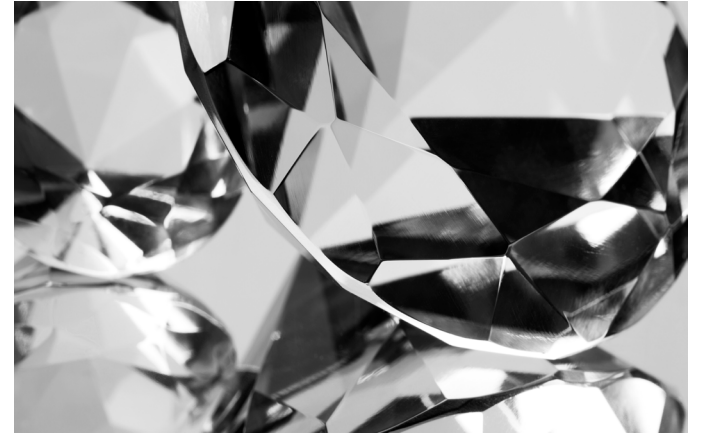
During the Qing Dynasty, Chinese glass art flourished, reaching its golden age. In 1696, Emperor Kangxi established a glass factory and invited the renowned German glass expert, Bernard-Kilian Stumpf (1655-1720), to Beijing. Stumpf's expertise contributed to the production of glass and the training of Chinese artisans. Later, in 1727, Emperor Yongzheng established another glass factory in Yuanming Park. The masters from both factories collaborated, creating a glorious chapter in the history of Chinese glass art.

One master from these glass factories passed on the art of glass production, and his descendants carried forward the tradition, continuously improving glass production techniques. They skillfully blended traditional handmade methods with modern technologies. Today, we continue this heritage by crafting high-quality, crystal-clear bottles using #PureVersion glass, maintaining its exceptional quality.

As a manufacturer of premium glass cosmetic container, its goal has been to produce the perfect glass for over a century. In collaboration with this esteemed glass manufacturer, we have developed the rebo Glass Airless dispenser, crafted from crystal-clear glass, to complement your product.



Why rebo Glass?



Environmentally friendly:

Glass is an environmentally friendly alternative to plastic due to its complete recyclability and endless reusability. Unlike plastic, glass does not contain toxic chemicals or contribute to water, soil, and air pollution. It is composed of molten, cooled, and solidified amorphous inorganic silicate, resembling natural land minerals found in the environment.

Hygienic:

Glass possesses exceptional durability and resistance to moisture, air, and other environmental factors. It effectively prevents the evaporation of volatile components in the content. Additionally, glass is highly hygienic as it does not release chemicals, absorb odors or flavors, and can be easily cleaned.

Durable: Glass is a hard, resilient material that does not discolor, scratch, or fade. That's why our team has designed the Glass Airless dispenser with a refill system.

Aesthetics: Glass provides a premium aesthetic appeal compared to plastic. It offers versatility in terms of size and color options, allowing you to perfectly customize the appearance of your packaging and align it with your brand's identity.



rebo Gallery





rebo AIRLESS DISPENSER



© 2023. FOR INTERNAL USE ONLY.

100% recyclable
packaging

rebo Bamboo *Limited Edition*

15 ML | 30 ML | 50 ML

Bamboo packaging doesn't have to look like bamboo!

Bamboo possesses a unique character that may not be suitable for all products. However, through our exceptional processing techniques, bamboo can be dyed in a manner that seamlessly blends the bamboo packaging with your product.

Processing technique

Coating	<input checked="" type="checkbox"/>	Full color
	<input checked="" type="checkbox"/>	Gradient color
Screen printing	<input checked="" type="checkbox"/>	
Laser engraving	<input checked="" type="checkbox"/>	

Material:

Bottle	<input checked="" type="checkbox"/>	Bamboo
Cap	<input checked="" type="checkbox"/>	PCR+Bamboo
Pump	<input checked="" type="checkbox"/>	PCR
refill Container	<input checked="" type="checkbox"/>	PCR



A photograph of a dense bamboo forest. A narrow, light-colored path leads from the bottom center towards the background, flanked by tall, thin bamboo stalks. The bamboo stalks are a mix of green and brown, creating a textured wall on either side of the path. In the distance, a few taller trees with green foliage are visible through the bamboo canopy. The lighting is soft, suggesting a misty or overcast day.

rebo Bamboo *Limited Edition*

From dell to sell

Bamboo is the fastest-growing plant in the world, making it a sustainable alternative to conventional packaging. Its growth cycle is relatively short compared to wood, taking only 4-5 years to reach harvest maturity, while the growth cycle of wood typically exceeds 10 years.

In the mountain valleys of Southwest China, there are abundant bamboo forests, some of which have existed for thousands of years. Bamboo is widely used in various areas, such as everyday items, bamboo instruments, bamboo furniture, bamboo crafts, etc., and is closely intertwined with life and art. However, with the continuous progress of industrialization in human society, many traditional bamboo craftsmen are facing challenges and potential extinction.

Our team is committed to merging modernity with tradition. We strive to preserve the traditional craftsmanship of bamboo products while promoting their development and innovation. After years of research, we have partnered with an experienced bamboo processing factory in Hunan to combine traditional bamboo art with our innovative ideas. Together, we have created the rebo Bamboo Airless Dispenser! This product values traditional bamboo craftsmanship and integrates our creativity with a unique design.



Why rebo Bamboo?



This new premium cosmetic packaging is crafted from bamboo, offering both durability and protection for your products. With its natural and exotic appeal, the bamboo dispenser adds a touch of elegance. We have combined sustainability with the refill concept, ensuring a responsible packaging solution.



Our bamboo packaging doesn't have to resemble traditional bamboo. Thanks to our partner's advanced processing technology, the dispenser can be customized to meet your unique preferences. Through a full-surface coating, the bamboo dispenser can resemble high-quality plastic packaging, with a smooth and refined finish in your desired color. It's only upon touch that one realizes it's actually bamboo!

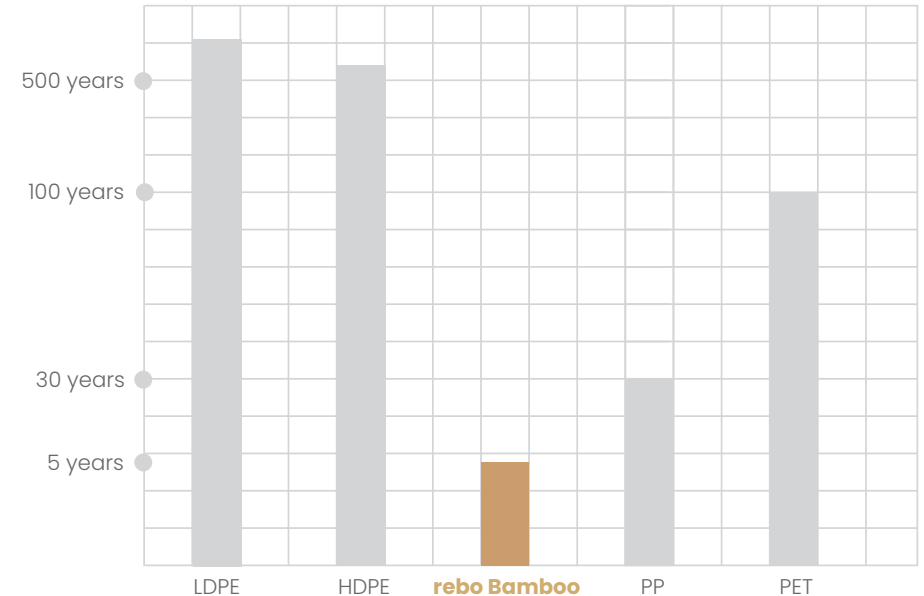


The bamboo airless dispenser goes beyond being just a packaging bottle. It can also be a personalized gift. Customers have the option to have their name or a custom message engraved on the dispenser, adding a delightful element of surprise. This personalization not only delights customers but also encourages them to continue purchasing your refill products. It fosters customer loyalty and ensures repeat purchases, bringing joy to both you and your customers.

Specifications:

15 ml	<input checked="" type="checkbox"/>	45 ø x 86 H mm
30 ml	<input checked="" type="checkbox"/>	45 ø x 118 H mm
50 ml	<input checked="" type="checkbox"/>	45 ø x 157 H mm

The degradation time of rebo Bamboo & plastics



Glow Getter
The Moisturizer



Made in Creative

rebo Gallery

**Pure
Radiance**
The Serum



Made In Creative



rebo AIRLESS DISPENSER



© 2023 FOR INTERNAL USE ONLY

100% recyclable
packaging

rebo Porcelain

15 ML | 30 ML | 50 ML

Elevate your beauty ritual with the grace of porcelain, encapsulating elegance in every drop.

Material:

Bottle	<input checked="" type="checkbox"/>	Porcelain
Cap	<input checked="" type="checkbox"/>	Porcelain and PCR
Pump	<input checked="" type="checkbox"/>	PCR
refill Container	<input checked="" type="checkbox"/>	PCR

Specifications:

15 ml	<input checked="" type="checkbox"/>	44 ø x 105 H mm
30 ml	<input checked="" type="checkbox"/>	44 ø x 133 H mm
50 ml	<input checked="" type="checkbox"/>	44 ø x 171H mm





rebo Porcelain

The art that radiates for millenniatausende strahlt

Porcelain has a long and fascinating history. As a precursor to porcelain, the original proto-porcelain known as “grain-firing” marked a significant transition from earthenware to porcelain. The oldest known example of this original proto-porcelain was discovered in Xiazhen, Shanxi and is approximately 4,200 years old.

Over millennia, porcelain has unfolded its beauty in different eras and across the globe. This ancient invention has continuously evolved and is beloved by people worldwide for its unique beauty. But how can we bring this exquisite artwork closer to our daily lives? We proudly present our innovative product, the rebo Porcelain Airless Dispenser. Immerse yourself in the world of porcelain and experience the smooth gliding, radiant luster, and sublime elegance of this noble material at any time.



Why rebo Porcelain?

Uniqueness: Porcelain captivates with its unparalleled aesthetics and captivating tactile sensation. The moment one touches porcelain, they are greeted by its exceptional smoothness, refreshing coolness, and delicate nature, evoking a feeling of utmost refinement and exclusivity. This elevates the product's quality and visual allure to new heights.

Recyclability: Porcelain is a recyclable material. A prevalent approach to recycle porcelain waste involves its utilization as a substitute for natural rock materials. This field of research has already yielded fruitful outcomes in commercial productions. Moreover, recycled porcelain materials can be employed in the production of recyclable porcelain products, further enhancing sustainability.

Durability: Its exceptional durability and resistance to wear, enable porcelain product to withstand the test of time and frequent use. This remarkable resilience ensures that porcelain products are less susceptible to being discarded, thereby reducing the need for disposable packaging materials.

Stability: The remarkable chemical resistance of porcelain containers ensures that they remain unaffected by the chemical components found in food or cosmetics. They neither release harmful substances nor compromise the taste of the contents. Additionally, the opaque nature of porcelain containers offers enhanced protection for light-sensitive products, safeguarding their integrity.



*artistically gorgeous,
surpasses the magnificence of peonies*



rebo Gallery



Dispenser refillable rebo
Porcelain Airless

UNIQUELY ORI

Pea

"Dis

*exquisite and elegant,
like a dream among fallen blossoms*



rebo

" THINK MORE, MAKE DIFFERENCE "



TIANSHI PACKAGING

www.tianshiprint.com