

SS24
ecco
LEATHER GOODS



CUSTOMISABLE ECCO POTBA MANUAL



7 COLORS

- FOAM WHITE

910771191027

- CYBER YELLOW

910771191186

- STRONG TURQUOISE

910789891173

- PATINA GREEN

910789891119

- BLUE DEPTH

910789891032

- PASTEL LILAC

910771190978

- VIBRANT SCARLET

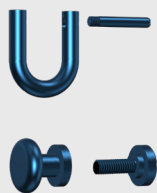
910789891071



Thousands of possibilities



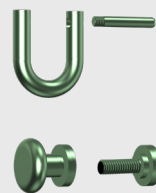
4 COLORS HARDWARE



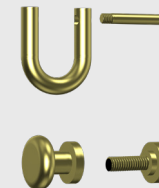
BLUE COLOR



SILVER COLOR

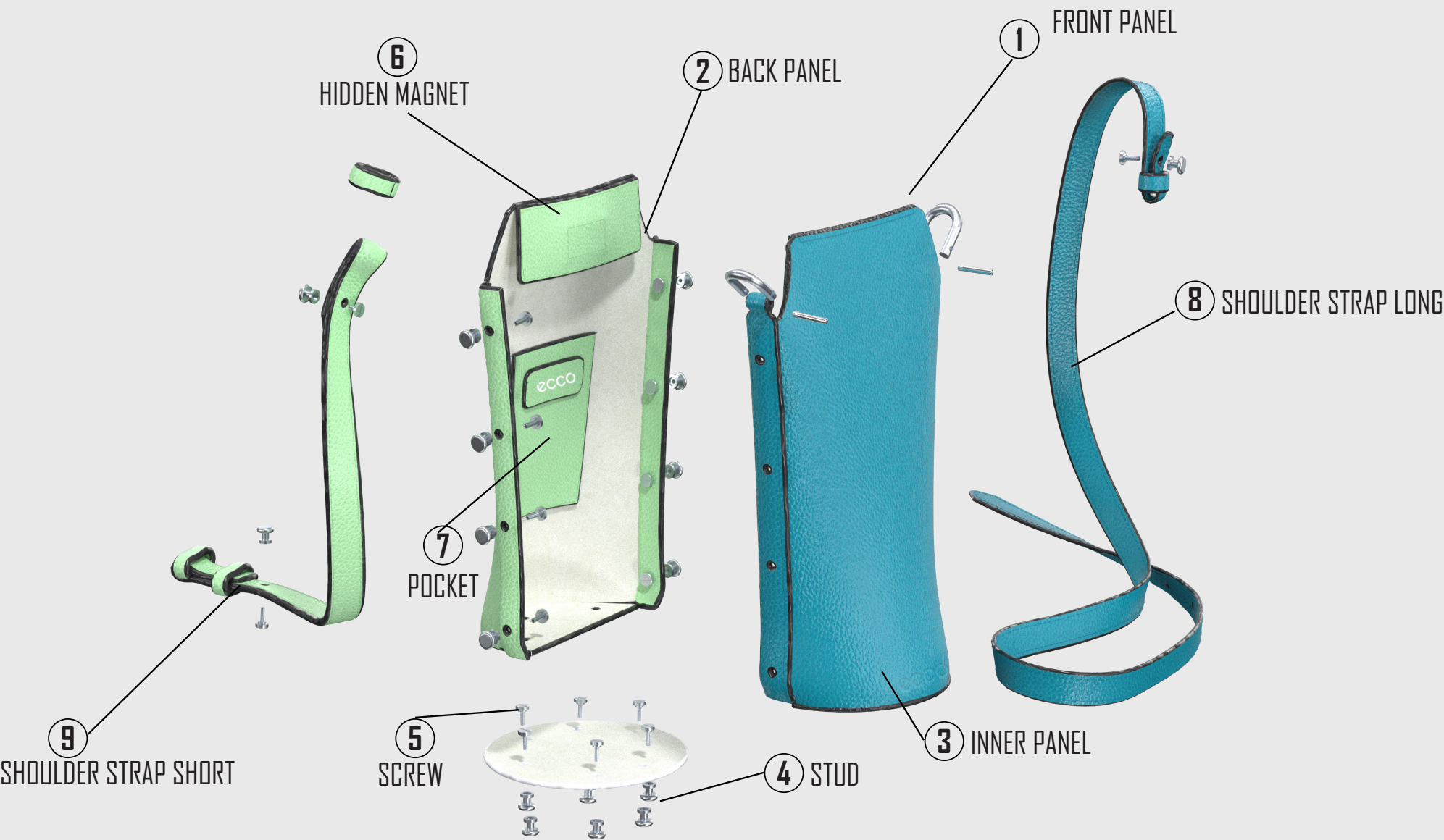


GREEN COLOR



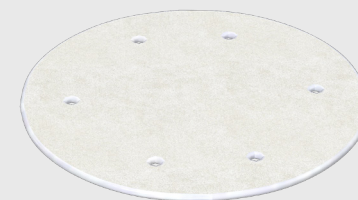
GOLD COLOR

EXPLODED-VIEW



COMPONENTS-LEATHER

- FRONT BODY X 1 PIECE
- BACK BODY X 1 PIECE
- INNER BODY X 1 PIECE
- SHOULDER STRAPS X 2 PIECES



INNER PANEL



FRONT BODY
- BACK SIDE



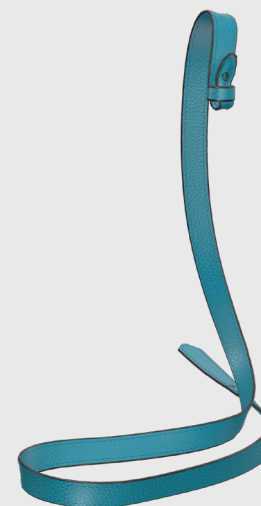
FRONT BODY
- FRONT SIDE



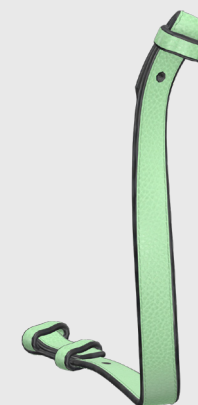
BACK BODY
- FRONT SIDE



BACK BODY
- BACK SIDE

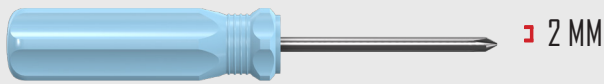


SHOULDER
STRAPS LONG



SHOULDER
STRAPS SHORT

COMPONENTS-ACCESSORIES



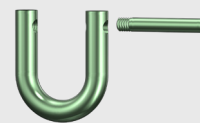
CROSS SCREW DRIVER (2MM) - D RING



SILVER COLOR



GOLD COLOR



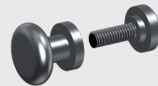
GREEN COLOR



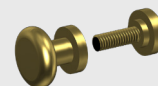
BLUE COLOR



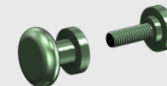
SLOTTED SCREW DRIVER (5MM) - SCREW & STUD



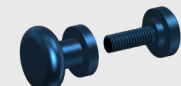
SILVER COLOR



GOLD COLOR



GREEN COLOR

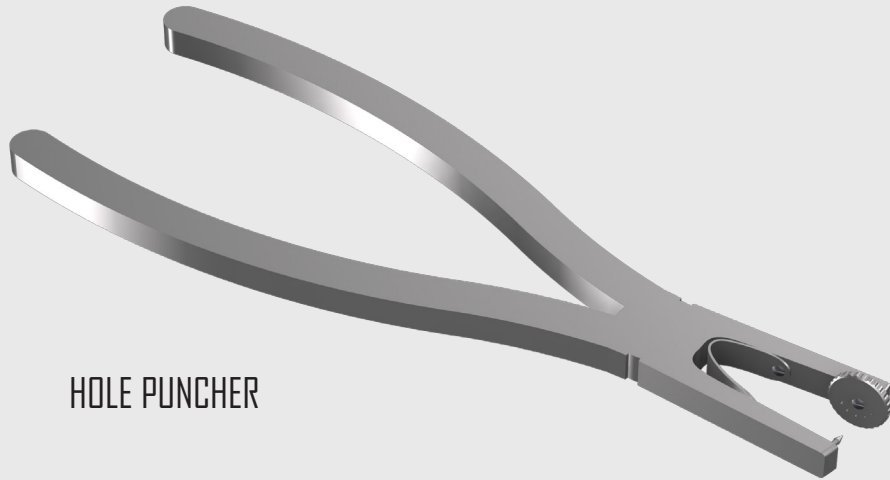


BLUE COLOR

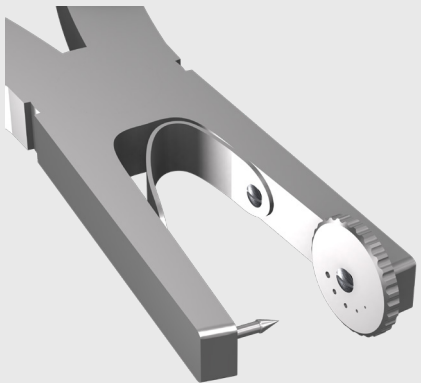


LOCTITE GLUE

COMPONENTS-ACCESSORIES



HOLE PUNCHER



HOLE PUNCHER CLOSE-UP

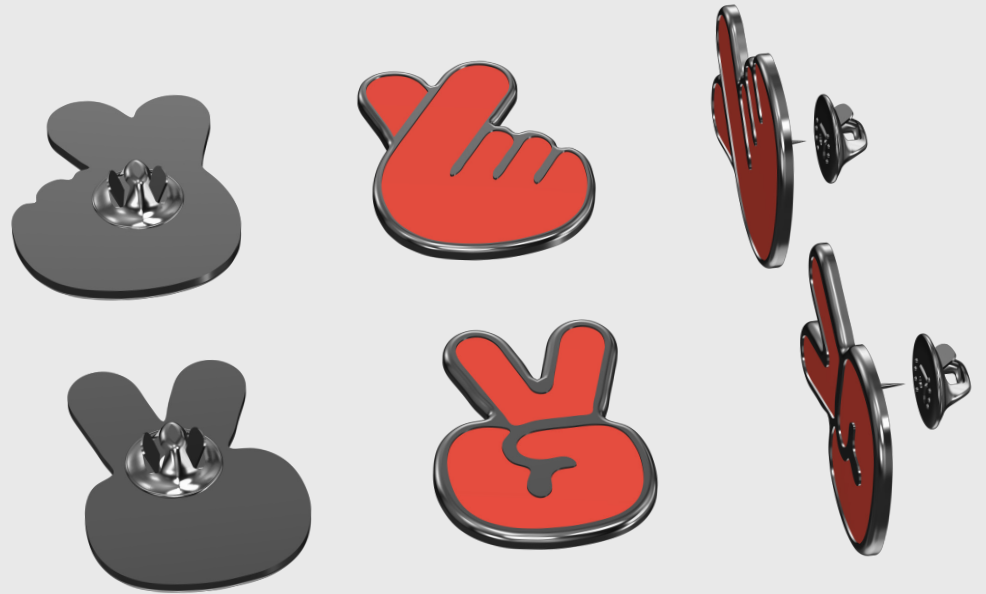
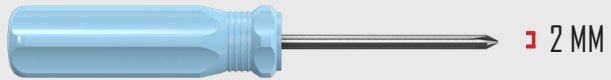


PLATE LOVE & PEACE SIGN

* PURCHASE LOCALLY



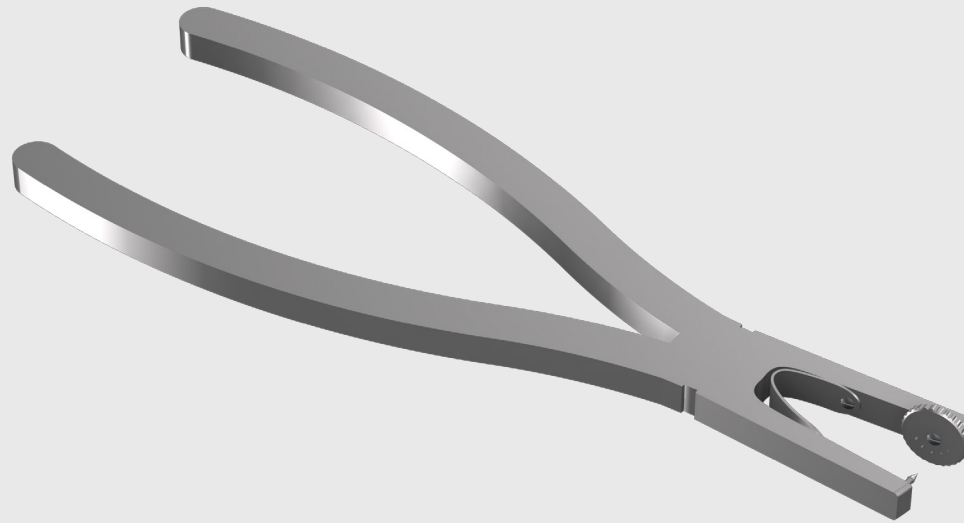
CROSS SCREW DRIVER (2MM) - D RING



SLOTTED SCREW DRIVER (5MM) - SCREW & STUD



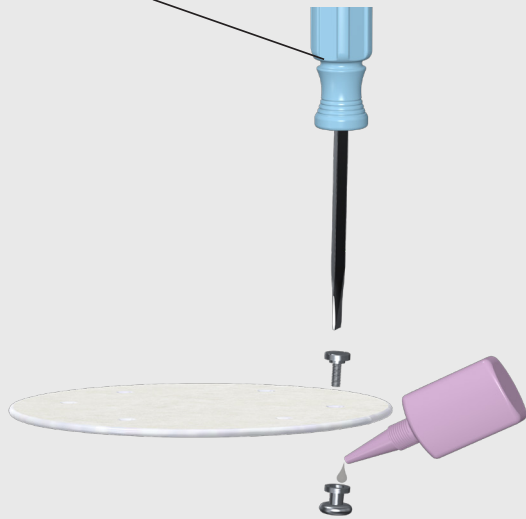
LOCTITE GLUE



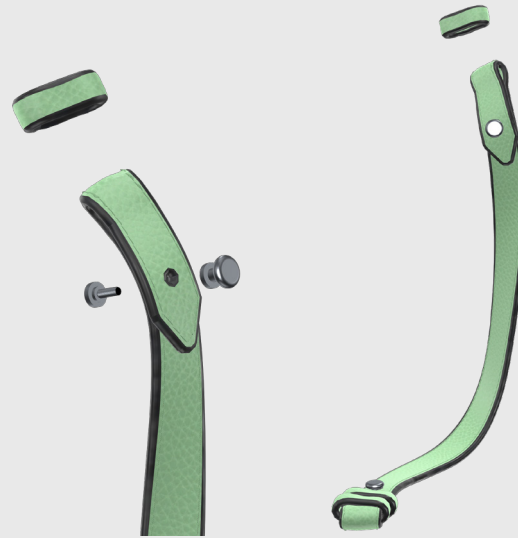
HOLE PUNCHER

USAGE OF TOOLS

5 MM SLOTTED SCREW DRIVER



- Carefully apply one drop of glue inside of stud before attaching the flat head screw in order to secure the closure.



- Attach the pin stud and screw on the shoulder straps.

2 MM CROSS SCREW DRIVER

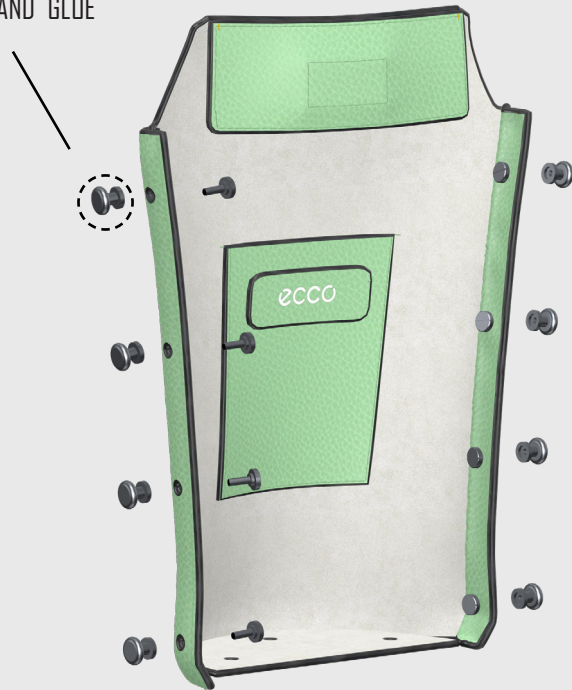


- Carefully apply one drop of glue inside of D ring before attaching the bar in order to secure the closure.

STEP 1

Attach flat head studs to back body (the logo side).

*USE 5MM SLOTTED
SCREW DRIVER AND GLUE

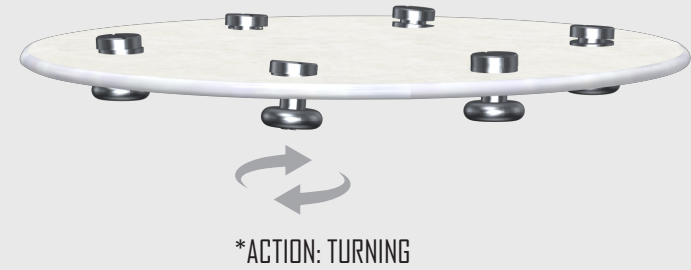
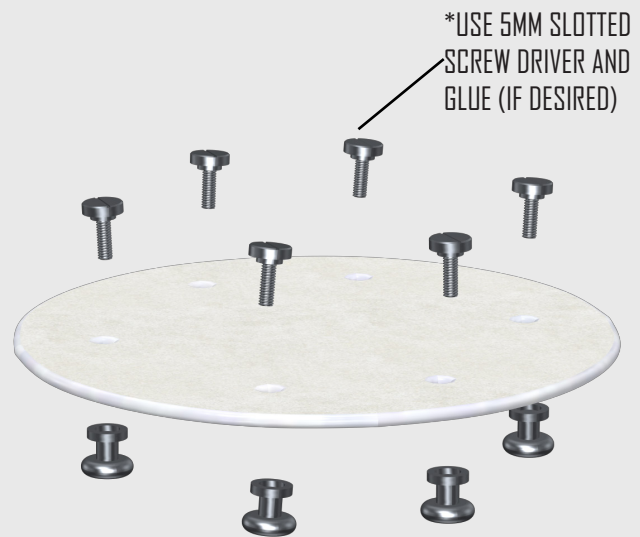


*ACTION: TURNING



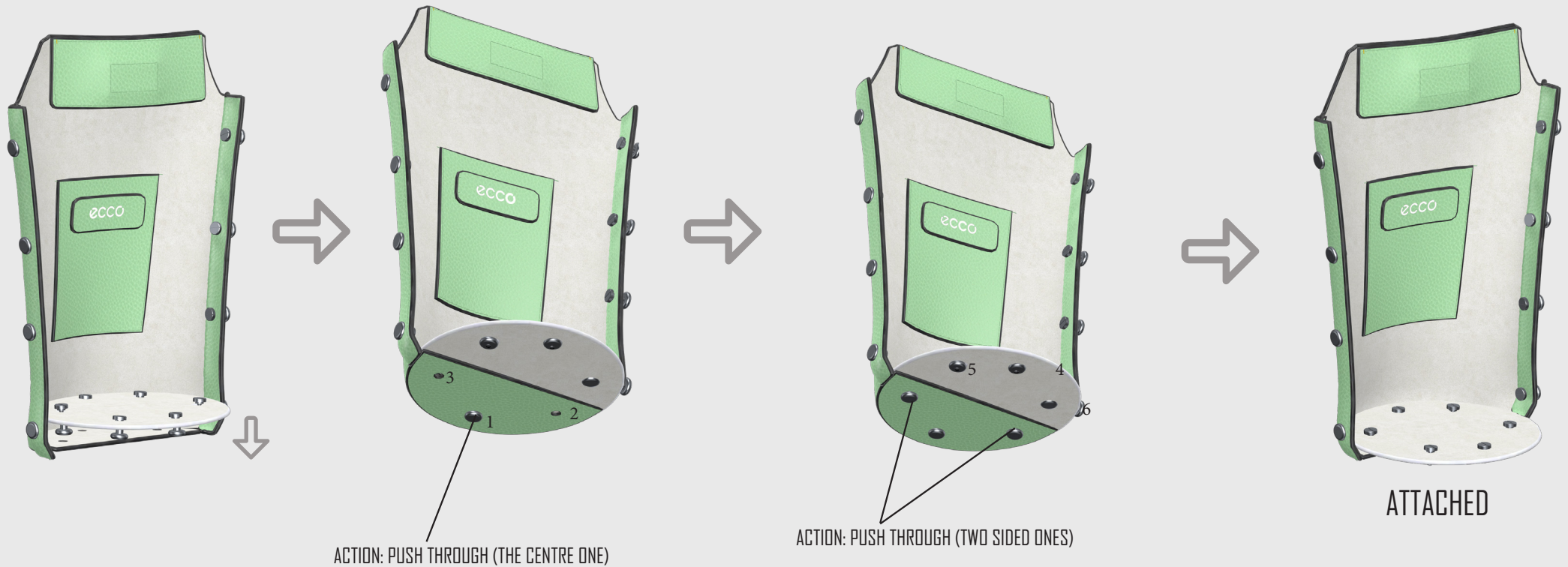
STEP 2

Attach flat head studs to the microfiber base.



STEP 3

Attach the microfiber base to the back body.

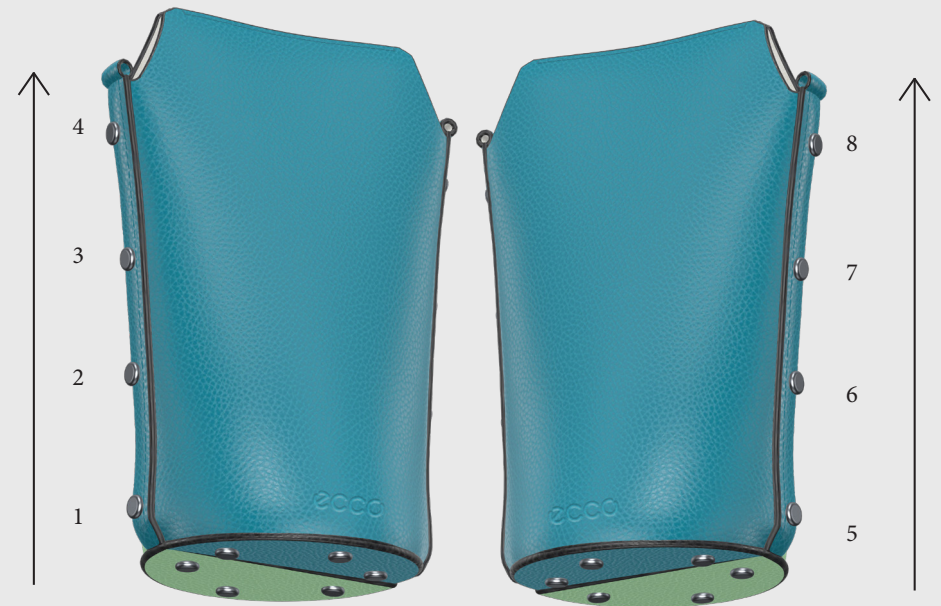


STEP 4

Attach the back body + microfiber base to the front body.



+



BACK BODY + MICROFIBER BASE

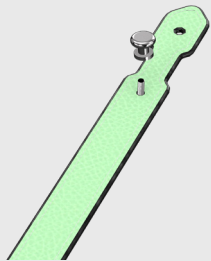
FRONT BODY

ATTACH HARDWARE FROM BOTTOM TO TOP ON ONE SIDE, AND THEN THE OTHER SIDE.

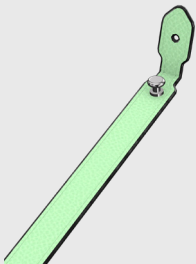
STEP 5

Attach flat head studs to the short shoulder strap.

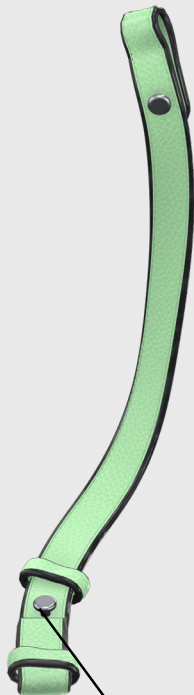
* ATTACH PIN STUD ON SHOULDER STRAP, USE 5MM SLOTTED SCREW DRIVER AND GLUE (IF DESIRED)



FOLD THE STRAP AND PUSH IT THROUGH THE PIN STUD



* ATTACH PIN STUD ON SHOULDER STRAP, USE 5MM SLOTTED SCREW DRIVER AND GLUE (IF DESIRED)



*ADD LEATHER LOOP ON THE SHOULDER-STRAPS



* INSERT THE D RING INSIDE OF THE SHOULDER STRAP



*ATTACHED SHOULDER STRAP (SHORT) WITH D-RING, APPLY ONE DROP INSIDE OF THE D-RING AND THEN INSERT THE BAR, USE 2MM SCREW DRIVER TO FIX THE D RING.



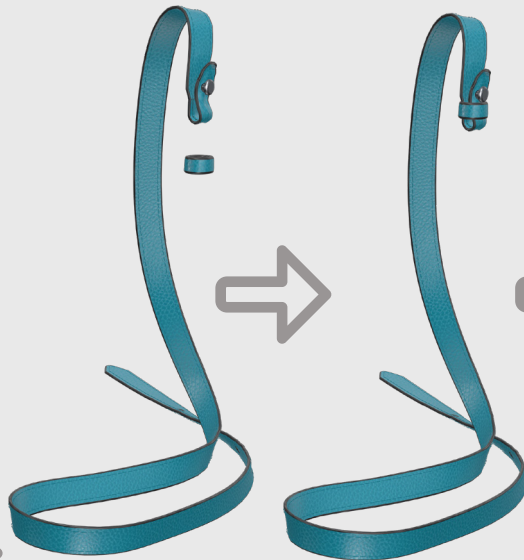
STEP 6

Attach flat head studs to the long shoulder strap.

* ATTACH PIN STUD ON SHOULDER STRAP, USE 5MM SLOTTED SCREW DRIVER AND GLUE (IF DESIRED)



FOLD THE STRAP AND PUSH IT THROUGH THE PIN STUD



*ADD LEATHER LOOP ON THE SHOULDERSTRAPS



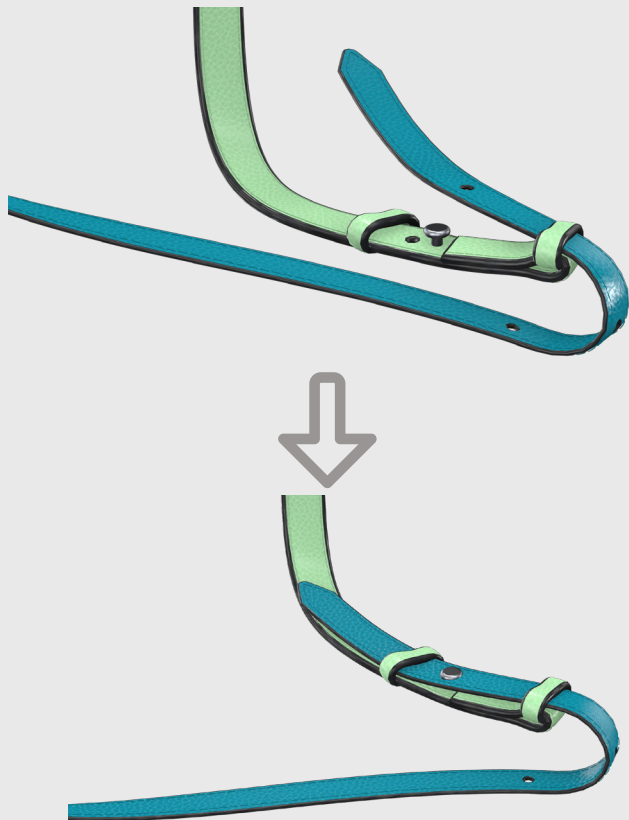
* INSERT THE D RING INSIDE OF THE SHOULDER STRAP



*ATTACHED SHOULDER STRAP (LONG) WITH D-RING, APPLY ONE DROP INSIDE OF THE D-RING AND THEN INSERT THE BAR, USE 2MM SCREW DRIVER TO FIX THE D RING.

STEP 7

Insert the long strap in the short strap, and adjust the length.



STEP 8

Make a hole (holes) for an enamel plate(s) where desired.



STEP 9

Make a hole (s) for an enamel plate(s) where desired.

