

# Coronavirus and Plans for 2020

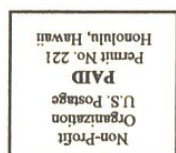
Due to the rising COVID-19 cases, Jodo Mission of Hawaii has decided that our **Bazaar is CANCELLED for 2020**. Although this yearly event is a good money-making event and it brings lots of people to find unusual goodies for themselves and others, Jodo Mission feels we cannot jeopardize people's health by having people gather to search for items. In addition, we are not accepting Bazaar donations at this time. We are hoping 2021 will be a better year.



Another good money making event is our Mochitsuki at the end of the year. This too brings a lot of people to help and enjoy making mochi, however, we want everyone to be safe and healthy. **Mochitsuki or mochi making on December 27, 2020 is CANCELLED.**

Please remember to **1) wear a facial mask wherever you go and make sure your eyes, nose and mouth are covered, 2) social distance between you and others 6 feet, 3) avoid crowded areas, 4) wash your hands often with soap for at least 20 seconds and if unable to please use an alcohol based sanitizer, 5) avoid shaking hands.**

**Sunday Services** are being conducted at 10 am on most Sundays. Please check our website, **jodo.us** for any up-to-date changes. We do take temperatures, everyone wears a mask and gloves, practice social distance of 6 feet (every third pew). However, **Autumn Higan Service 9/20 will be virtual (no attendance).**



Address Service Requested

Jodo Mission of Hawaii  
1429 Makiki St.  
Honolulu HI 96814

(#1286-0920)

JODO MISSION OF HAWAII  
BULLETIN - SEPTEMBER 2020



## Message from Bishop Kosen Ishikawa

Lately, I read a Newsweek article that COVID-19 is spreading faster in Hawaii than anywhere else in America while Hawaii was said to be one of the safest states.

Instead of taking up specific reasons, they report on the facts that there were a lot of crackdowns on violators of the orders such as social distancing order.

It says the state is seeing a triple-digit increase in COVID-19 infections, which has now put the state at the top of the list of virus "reproduction rates." Every person who gets sick with coronavirus passes it on to an average of 1.6 other people in Hawaii while the closest comparative states of South Dakota and Texas are only at a reproduction rate of 1.16.

This article sounded like there were more people in Hawaii who didn't follow the safety guidelines and orders. They also used the photo of the people who looked like tourists breaking the order to do sightseeing on the closed beach park.

It is true there are both residents and tourists who don't follow the orders of safety. However, I think much more people in other states don't use masks and don't practice social distancing. This means this article never explained why Hawaii has such a high virus reproduction rate? Rather, this article is actually misleading us to the conclusion that namely, tourists are breaking the orders. We need to remember the majority of positive cases is Hawaii residents and tourists with positive cases are smaller numbers. Then why is Hawaii highly infected?

I thought it was because more people were living in the same household and more family gatherings through the important culture of "Ohana" or the family. I didn't check through all the numbers but Average number of households in Hawaii is about 3 or more while average in the US is about 2.5. In other words, the infection must be spreading from Ohana to Ohana.

A little while ago, I saw the news that a hairdresser in mainland, who was dealing with hundreds of customers, found out she was infected with the coronavirus. Then she notified all her customers and they all took the covid test. To my surprise, none of them were infected but found out hairdresser's partner was tested positive. I thought this was a good example of how easily people get infected in the same house.

Unfortunately the number of daily cases keeps growing. Stricter measures are surely effective to decrease numbers but numbers will surely go up again as soon as relaxing orders. Very difficult but we should not stick numbers but stick to continue to do our part such as washing hands, social distancing and wearing masks. Please be safe.

Gassho,

Bishop Kosen Ishikawa



2019 Keiro members & Sunday School members

---

## Keiro Kai and Grandparents' Day

**Due to COVID-19, Sunday School and Intermediate YBA will not be doing the Keiro Kai and Grandparents' Day this year.**

**However, you may honor your grandparents by giving them a call—face time would be great or skype or send them a nice note thinking of you.**

## **AUTUMN O-Higan Chutoba Form (彼岸会中塔婆申し込み用紙)**

Your Name(お名前) : \_\_\_\_\_ Phone (電話) : \_\_\_\_\_

Name of Deceased (亡くなった方のお名前) :

1. \_\_\_\_\_

2. \_\_\_\_\_

3. \_\_\_\_\_

4. \_\_\_\_\_

**Virtual Higan Service**  
**September 20 at 10 a.m.**  
No Attendees

Zoom link will be on website  
**www.jodo.us**

**Or you may go to YouTube**  
**and search for Kosen Ishikawa**

One Chutoba is \$7 X Total of Chutoba \_\_\_\_\_ = Total \$ \_\_\_\_\_  
(中塔婆1本7ドル) (本数) (合計)

**Please make checks payable to "Jodo Mission of Hawaii". DEADLINE: Wed, Sept 14, 2020**  
**Membership dues (Gojiai)(\$60) may also be included with your payment. Thank you.**

### FOR OFFICE USE ONLY

Order accepted by \_\_\_\_\_ Date accepted \_\_\_\_\_ / \_\_\_\_\_ /2020 (In person/ Mail / By phone)

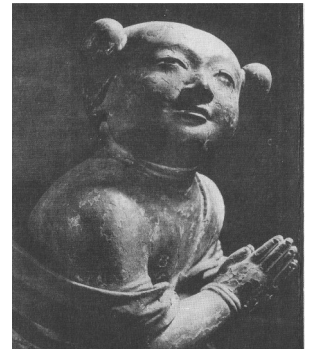
Received by \_\_\_\_\_ Date paid: \_\_\_\_\_ / \_\_\_\_\_ /2020 (Cash / Check # \_\_\_\_\_) Write \_\_\_\_\_

## **O-HIGAN SERVICE**

The word "Higan" literally means "the other shore" in Japanese. One shore represents the world we are in, and the other shore "Higan" represents Amida Buddha's Pure Land. The river represents the bad mind we all possess. The concept is that we practice the teaching to reach the other shore across the river.

We have two Higan seasons in a year. One in spring, the other in autumn, as Higan is held during the week of the spring and autumn equinox. Shan Tao, one of the highest ranking priests of Jodo Buddhism in China said that the sun sets due west during the equinox thus it is a good opportunity to think about Buddha's Pure Land which exists far away in the west, as well as appreciate our ancestors who are also there.

Please join us for our Virtual Higan service and think about Amida Buddha's Pure Land and our ancestors. Our **Virtual Higan Service** (no attendees) will be held:



**Sunday, September 20 at 10:00 am**

Chutoba prayers will be conducted during this service. If you would like a Chutoba prayer for your ancestors, please fill out the form on this page and send it or drop it off at the Jodo Mission office **by Monday, September 14th. Thank you.**

**What is a "Chutoba"?** Chutoba is a paper-thin rectangular piece of wood approximately 3" wide by 15" tall. The top 5" are cut on each side so that one can easily identify the shape of a pagoda. "Chu" means middle-size in Japanese. "Toba" means Pagoda. Chutoba means middle-size pagoda. A Pagoda indicates a memorial tower for Shakyamuni Buddha in Buddhism. People buried Buddha's ashes and his belongings under the pagoda after Shakyamuni Buddha passed away.

Because one of the sutra tells of the significance of worship for a Pagoda, many different forms of it were built in China, Japan and other countries. In earlier times, people began putting their ancestors' names on the toba and having prayers for their ancestors.





## Returning the Energy into Repaired Buddha

**Kaigen Ceremony**, which literally means “opening eyes” was conducted on two restored Buddhas. Our Buddha in Ikoi Hall was completely restored as this Buddha had many parts to it—backboard which had a lot of termites, the many levels of its stand was partially eaten and the Buddha was tarnished over the many years. When it returned from Japan, it was like a whole new Buddha. We waited for an opportunity when Bishop Ishikawa could perform the Kaigen Ceremony on the Buddha to renew the energy after being restored. Japan Memorial assisted in shipping it to Japan and also gently taking it out of the crates, putting it together and carrying it carefully to its home. Thank you Scott and thank you Sensei.



Above Buddha statue was also sent to Japan to be restored. The metal was so tarnished and restored so beautifully. This Buddha statue was used for the O-Bon Services in August in the social hall. It is much sturdy since it is metal whereas Buddha statue in Ikoi Hall has a lot of wood with lots of parts and is more fragile. This Buddha statue was repaired from the donation from the Sr. Meisho YBA. Thank you YBA and Sensei.



# Otoba Set Up and Temple Cleaning



**Thank you** everyone who helped put up the Otobas, polished metal candle holders, cleaned 3 Nokotsudo or Columbarium and thank you to Linda, Carol and Robb of the Sogetsu group who brought pine and bamboo for the Segakidan and Shoryodana. Some of the shiny metal pieces can be seen on the Segakidan below and with the Buddha statue. Apologies to the hard working Otoba workers which photos were not taken and thank you for a wonderful job putting up the 500+ Otobas. They were beautifully set up with the help of Jo Ann who orchestrated how to set up the Otobas and also having the large Otoba and the Buddha statue be in line. Thank you. Thank you. It is only with everyone's help here and there that we can produce something beautiful! **Can't wait for the virtual services!**



**Something of interest:** Left photo is of Segakidan at top of stairs in temple. During the O-Bon Service, the officiant minister goes to the Segakidan and offers the



wonderful foods to the hungry spirits. In the social hall is the Shoryodana which welcomes all our ancestor spirits during O-Bon. Thank you Yukari-san for preparing the many meals for the hungry spirits in temple and our visiting ancestors in the social hall. Note: This year the Shoryodana is near the Big Otoba as we welcome the ancestor spirits during O-Bon as Buddha overlooks everyone.

Christine helped clean the Nokotsudo and then pulled some weeds and rested for a few minutes.

## What is “Perpetual Memorial Service?” (Eitaikyo)

This record of a perpetual memorial service and is called *Eitaikyo* in Japanese. When the date of death occurs for a person listed on this record, the ministers pray for that individual during the morning service. The prayers will continue each year for as long as Jodo Mission exists.

Anyone can be included in it. You may put your own name on the list, too. This also helps when it is difficult to have memorial services. We also welcome you to attend the morning service at **9:30am**. (Note time change due to Covid-19, please call temple if you decide to attend.)

### How to apply

Stop by the office, and fill out the application form. Each name costs \$200. After the application is accepted, the name will be listed on the record.

## Jodo Mission Office Hours:

Monday to Saturday  
8am–5pm

Sunday & Holidays  
8am–3pm

Phone: 949-3995

Website: [www.jodo.us](http://www.jodo.us)



Bishop Kosen Ishikawa



Rev. Myoko Takano  
Resident Minister

## Obituaries

The Jodo Mission of Hawaii extends its sincere condolences to the family members and loved ones of the following members who have recently left this world for the Pure Land.

David Kanji Miyamoto	96
Archie Atsuto Terao	92
Richard Ichiro Sasaki	96

## **Please Stay Safe** (cont'd from pg 1)

**Keep Hydrated:** Although it is important to wear masks, please take a break and **remember to drink water**, especially seniors who are at a higher risk of dehydration. Drinking juices from fruits and vegetables, i.e. watermelon, cucumbers, milk and tea.

**Benefits of Hydration:** Regulates your body temperature, removes waste from your body, protects your tissues and joints, aids your digestion and prevents dehydration.

## **Notice to Nokotsudo Columbarium Users**

**Please do not put any candies in the Niches** in the Nokotsudo/Columbarium. During the temple cleaning, we did find a couple of niches had candy pieces and although they may be wrapped in foil and plastic, in time, they do disintegrate and they may be food to some critters.

The niches are made of wood and we would like to keep them in good condition for a long time.

Thank you very much for your understanding.



## EITAIKYO (Perpetual Memorial Service) for September

1. Seijiro Mitsuyasu  
The Mitsuyasu Family  
Takao Nishimura  
The Nishimura Family  
Kamado Gushikuma  
Mary Fujie Takimoto  
Nathaniel Hiromasa Shindo
2. Kiku Sugimoto  
The Sugimoto & Samoto Family  
Yutaro Karamatsu  
The Karamatsu Family  
Kiku Kusunoki  
The Kusunoki Family  
Minbunosuke Sakuda  
Albert Shigetoshi Wachi
3. Eikichi Nakamoto  
The Okamoto & Nakamoto Family  
Reverend Hoyu Ohta  
The Ohta Family  
Katsume Kuniyuki  
Tetsuji Tamura
4. Shizuko Morita  
Helen Kikuno Mitsutani  
Bert Nobuo Yoshida  
Eisuke Tamura  
Hoichi Ogawa
5. Kikuyo Iwamoto Kam Siu  
Shigeki Hayashi  
Yuriko Naito
6. Toramatsu Yamamoto  
Kamekichi Shigeoka  
Suteno Yoshida  
Masaichi Toishigawa  
Kichigoro Ikeda  
Yukimi Okada
7. Nobuo Hara (2)  
Ryogen Matayoshi
8. Suke Muranaka  
The Muranaka Family  
Azuma Tojo  
The Tojo Family  
Toshiko Judy Maeda Yanagihara
9. Mitsue Shigeoka  
Shunsuke Ogi  
The Ogi Family  
Shigeru Takeda  
Yone Wakayama Umeda  
Masako Koyama
10. Ritsu Inada (2)  
The Inada Family (2)  
The Morimoto Family  
Tsune Kuniyuki  
Shimo Hashimoto  
Sana Tamura  
Yukie Sakauye
11. Yorizo Yamane  
The Yamane & Harada Family  
Ikuzo Kuniyuki  
Nobuo Tsuda  
Mike Shigeo Hara
12. Junji Sano  
The Nishimoto Family  
Sada Hayashi  
The Hayashi Family  
Masao Fukuzawa  
Tsuneyasu Tamanaha  
Ann Umeyo Ohta  
Taeko Stella Uehara  
Shikazo Hayashi
13. Yoshigoro Takata  
The Takata Family  
Kumayo Nomura  
The Nomura Family  
Robert Yoshio Kawakami  
Yasuichi Moritsugu  
The Henry Tsuruhisa Hijii Family  
Tatsui Oshita
14. Matsu Ohta  
Kikuzuchi Takaoka  
Toshio Mitani  
Frances Yano  
Shizuko Uyehara
15. Umeyo Nishimura  
The Nishimura Family  
Ishi Yagi  
The Yagi & Okada Family  
Takeji Kobara  
Masaji Kawasugi  
Shizue Masuda  
Stanley Yuji Yokoyama  
Ayako Nakata  
James Hajime Koike
16. Shigenori Uesugi
17. Rikuji Hashimoto  
The Hashimoto Family  
Fujie Nomiyama  
Tomio Machida
18. Kinjuro Sugimoto  
The Sugimoto & Samoto Family  
Take Kitagawa  
The Kitagawa Family  
Tameo Shintani  
Kamejiro Uyeda  
Hoichi Fujita  
The Fujita Family  
Mie Kashiwa  
Fumiko Yamane  
Nobuko Tsuruda
19. Kichijuro Miyashige  
The Goto & Miyashige Family  
Seitoku Higa  
The Weiss Family  
The Sunagawa Family  
Fusae Ippongi  
Bryan Kenji Weiss
20. Shoichi Ishida  
The Ishida & Aimoto Family  
The Iwamoto's Baby  
The Iwamoto Family  
Kiyoko Isobe
21. Kumanoshin Yamamoto (2)  
Yoshiko Nakahara (2)  
Wanda Akemi Hamada
22. Miyo Koyama  
The Koyama Family  
Keikichi Mishina  
The Mishina Family  
Kame Higa  
The Higa Family  
Ruth Yoshiko Medeiros  
Tsuchitaro Iwamoto  
Eleanor Haruko Nose  
Shigeko Machida
23. Kiyoshi Matsushita  
The Matsushita Family  
Yoshiaki Ono  
The Ono & Yamada Family  
Yoshio Uchiumi  
Riichi Hirouji
24. Ryuichi Hamada  
The Hamada Family  
The Sakaue Family  
Shieto Saiki  
Aya Asaumi  
Noboru Sakauye
25. Haruyo Yanagihara  
Kamematsu Onohara  
Mitsuru Harada
26. The Nishimura's Baby
27. Seiichi Tanaka  
The Tanaka & Takahashi Family  
Hakuyo Ebisuzaki (2)  
Goro Shindo
28. Kimi Morita  
The Morita & Ashinaka Family  
Dorothy Natsue Hayashi  
The Hayashi Family
29. Kiku Tanimura  
The Tanimura Family  
Ryosuke Yanagisawa  
The Yanagisawa Family  
Ushi Shimabukuro  
Akio Shimabukuro  
The Shimabukuro Family  
Kiyo Yamachika  
The Yamachika &  
Matsushige Family  
Ishi Uyenoyama  
Yuu Kunihisa  
Yoshiwa Tarumoto  
Chieko Yamamura
30. Francis Kiyoshi Furutani  
Charles Tanaka  
Jean Miyoko Higaki  
George Giichi Ohara  
Tamayo Nakamura

9:30am Morning Service Everyday  
Note: Time may change due to  
 COVID-19 Schedule

# September 2020

*Jodo Mission of Hawaii*  
 Phone: 949-3995  
 Website: www.jodo.us

Sun	Mon	Tue	Wed	Thu	Fri	Sat
		1	2	3	4	5
6 10:00 Sunday Service;	7	8	9	10	11	12
13 10:00 Sunday Service 11:00 Board Mtg	14 Deadline for Chutoba Order	15	16	17	18	19
22 10 00: Virtual Higan Service	21	22	23	24	25	26
27 10:00 Sunday Service	28	29	30			

***Jodo Shu Calendar for September 2020:*** At all times, without exception, those who recite Namu Amida Butsu receive the generous compassion of Amida Buddha.

**Events:**

Sept 14      Deadline: Autumn Chutoba Orders  
 Sept 22      **Virtual** Autumn Higan Service (no attendance)  
 Oct 11      CANCELLED Jodo Mission Bazaar  
 Nov 9      O-Juya Service  
 Dec 28      CANCELLED Mochitsuki

**NO MEETINGS OR CLASSES in September** for

Fujinkai, YBA, Sewing Circle and Sunday School

**Bazaar Donations will NOT BE accepted temporarily.** Thank you for your understanding

**Membership Dues (Gojikai) REMINDER:** If you have not paid your membership dues (\$60) this year, please be sure to do so by making your check payable to **Jodo Mission of Hawaii** (mail to 1429 Makiki Street, Honolulu, HI 96814). *Thank you.*