

# sma-tra-box



## PARTICULARLY ROBUST AND FORMALLY STABLE

Thanks to the high material density and strength of EPP, our sma-tra-box is Dimensionally stable, shock-absorbing and scratch-resistant. The container is made from one piece without any seams or glue points therefore extremely break-proof and also ideal for heavy weights.

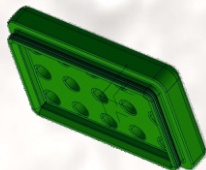


## EASY HANDLING

With their low weight and ergonomicThe sma-tra-box has shaped, non-slip handles easy and safe to use. It is machine washable up to 80 °C and also easy to clean manually, so the box is ready for your next use particularly quickly.

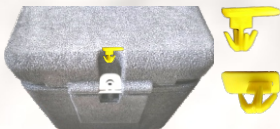
## SEAL AND CLOSURE

Neither moisture nor extreme temperatures can have something to do with the content. Thanks to the all-round, positive connection between base part and lid and the high material density nothing comes from inside or outside.



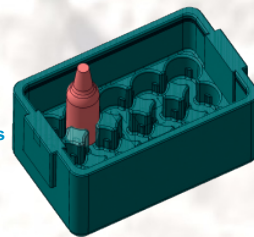
## SECURE CLOSURE BY SEALS

To prevent unwanted or unauthorized opening of the sma-tra-box, the bottom with the lid is through Pin seals secured. The recipient can easily remove these. New seals will be used for return shipments. A lock can also be used as an option.



## HIGH PRODUCT PROTECTION

Every single product is through positive separators both fixed in the base part as well as in the lid. The foamed, stable and shock-resistant absorbent material protects the Products even in strong external conditions influences optimally.

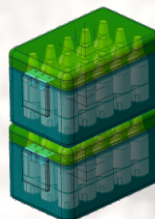


## RECYCLABLE

The box protects the contents and the environment. The entire sma-tra-box range is outexpanded polypropylene (EPP). EPP is not only stable and temperature-resistant, but also protects the environment (and that already in energy-saving production). EPP is 100% recyclable and free from pollutants.

## ISOLATION

Very low water absorption  
closed cell structure of the EPP bead  
and hydrophobic surface property  
high temperature resistance from -40 to a maximum of +120 °C



## STACKABLE

The intelligent stacking system ensures one space-saving and safe transport. The box base and lid fit together perfectly and are prevented the boxes slipping during transport.

## EPP what is that, actually ?

## EXPANDED POLYPROPYLENE

EPP is a polypropylene foam consisting of expanded, predominantly closed-cell foam particles.

The EPP-Pearls are filled with air and are therefore particularly environmentally friendly.

They guarantee good joint tightness of the molded parts and ensure excellent insulation and thermal insulation.

EPP is comfortable and clean and is doubly good for the environment. Manufactured without using halogenated hydrocarbons, and without compounds containing lead, cadmium, mercury or chromium. EPP is free of blowing agents as a raw material.

The ingenious combination of robustness, lightness and at the same time flexibility makes EPP a popular material in many areas. Anywhere where impact protection or heat and moisture protection is required, one appreciates expanding polypropylene for its characteristics.

Impact resistance, resilience and lightness make EPP ideal as material for high security and low weight.

A high energy absorption capacity combined with a very good resilience. In addition to the good chemical properties and temperature durability are the characterizing properties of EPP.

The low water absorption due to the closed-cell structure and hydrophobic surface property, easy cleaning, the good thermal insulation capacity as well as its good Environmental compatibility (= free of propellants and other chemical blowing agents) complete the property profile of EPP.

## Environment and costs

Naturally, reusable packaging is always a bit more expensive than disposable packaging, alone, because there are transport costs for returning the empties caused.

**Our environment should be worth that to us.**

The resulting return shipping costs can be partially offset by saving the cost of disposable packaging.

If you set the costs for the complex disposable packaging made of corrugated cardboard,



which, depending on the version, in the case with glass bottles. However, it can cost around € 3-6. The system will pay for itself within just a few cycles.

This means that every sma-tra-box saves a new box with padding or insulation and therefore depending on the version additionally up to 500 g CO<sub>2</sub> and up to 10 liters of water per use!

**Damit wird, der Versand mit der sma-tra-box nahezu klimaneutral.**



**TAL-solutions GbR**  
Thomas Lächler  
Bei der Sandteige 4  
D-74589 Satteldorf  
Tel. +49 7950 925 049  
mobile: +49 1713769473  
mail: [tlaechler@tal-solutions.de](mailto:tlaechler@tal-solutions.de)  
web: [www.tal-solutions.de](http://www.tal-solutions.de)



**Jacob Formschaum GmbH**  
Gewerbestraße 11-13  
D-90556 Cadolzburg  
Tel. +49 9103 7162-0  
mail: [info@jacob-formschaum.de](mailto:info@jacob-formschaum.de)  
web: [www.jacob-formschaum.de](http://www.jacob-formschaum.de)





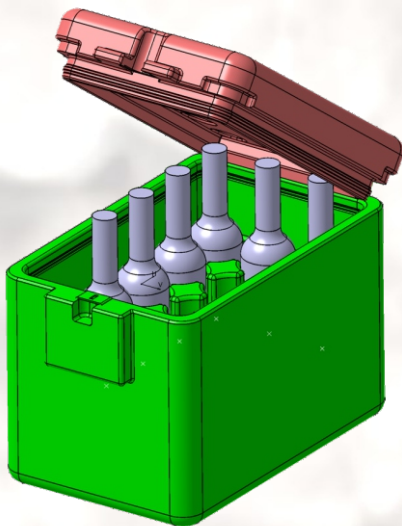
# Reusable transport box (EPP) for the wine and sparkling wine industry

## No more bottles break



Wine bottles are particularly fragile and sensitive and the content is quite valuable.

We have a special version of sma-tra box tailored to the appropriate bottle dimensions and container sizes developed.

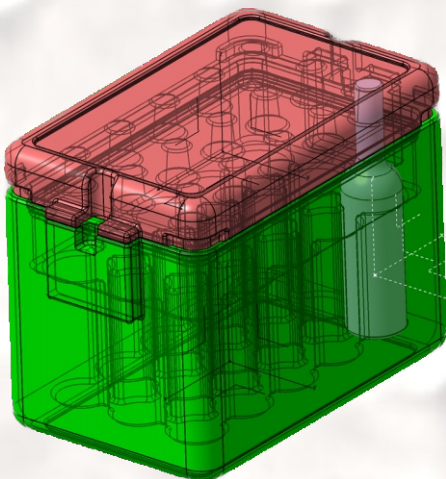


### Contents:

maximum capacity of the box  
12 pieces (4 x 3) 0.7 l wine bottles  
but can also get used for other quantities how 6 - 8 -9 -10 bottles.

### Bottle sizes:

An adaptation of the box for others  
Bottle sizes, shapes and quantities  
done by adjusting the inner design  
and the height of the box



### Number of rotations:

Due to the high Strength of the box with rounded corners, more than 200 rounds are possible.  
The ergonomic shape enables a safe Handling of the container by the delivery person.

