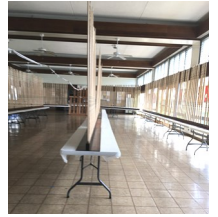


O-Bon Services at Jodo Mission of Hawaii August 20 to 22, 2021 Virtual O-Bon Services (No Attendance)

Due to Coronavirus, Jodo Mission of Hawaii has decided to have virtual O-Bon Services again this year. However, this year the difference will be instead of one Hatsubon service and one regular O-Bon Service, this year we will have one Hatsubon service and 4 regular O-Bon Services as follows:



Virtual Hatsu-Bon Service on August 20 at 10 am (Friday) (No Attendance)

ALL Hatsu Bon Sponsors and their Deceased will be called.

Virtual Regular O-Bon Service on August 20 at 6 pm (Friday) (No Attendance)

(O-Toba Sponsors from **A to Kagawa** will be called)

Virtual Regular O-Bon Services on August 21 at 10 am (Saturday) (No Attendance)

(O-Toba Sponsors from **Kajioka to Najita** will be called)

Virtual Regular O-Bon Services on August 21 at 6 pm (Saturday) (No Attendance)

(O-Toba Sponsors from **Nakagawa to Tamashiro** will be called)

Final Virtual Regular O-Bon Service on August 22 at 10 am (Sunday) (No Attendance)

(O-Toba Sponsors from **Tamura to Zhong** will be called

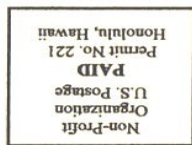
and then **ALL Chutoba Sponsors** will be called)

The Zoom link is as follows:

- <https://us02web.zoom.us/j/84166083058?pwd=MIB5cElSbFVocjVMeXFtZHJZQ3diQT09>



How to get the **QR code** >>>, Go to the Apple store (i-phone) or Play store (Android) to get a QR App and Zoom app. Then scan the QR code and you will be on Zoom. If you have any questions about the QR code, please call Jodo Mission office and speak to Rev. Myoko Takano. Thank you.



Address Service Requested

Jodo Mission of Hawaii
1429 Makiki St.
Honolulu HI 96814

(#1297-0821)

JODO MISSION OF HAWAII
BULLETIN - AUGUST 2021



For each O-Bon Service, before each group of O-Toba sponsors are read, we always honor those who came before us. There are 5 groups which will be read first: 1) All Deceased Members; 2) All Deceased Ministers; 3) All Deceased Wives of Ministers; 4) All Deceased Members of the Honolulu Jodo Shu Fujinkai; and 5) All Deceased Members of the Honolulu Meisho YBA.

What is O-Bon? O-Bon is the time of the year when our ancestors' spirits come back from the Pure Land and stay in this world. While here, we offer flowers, their favorite foods, fruits, candies, etc. to welcome them back for a short time. This O-Bon, Jodo Mission of Hawaii would like everyone to be safe.

As such, **NO ONE WILL BE ALLOWED TO ENTER THE SOCIAL HALL WHERE THE OTOBAS WILL BE DISPLAYED AND NO OTOBA OFFERINGS WILL BE ALLOWED.** Your understanding and cooperation is most appreciated. Because we have over 500+ Otabas which will be in the social hall, we do not have enough volunteers to help sanitize, take temperatures, and control the traffic of people going in and out of the social hall and also keep social distancing of at least 3 feet. We have a lot of elderly members and we want to keep everyone safe. *Thank you very much for your understanding.*

What happens at the Virtual O-Bon Service? All virtual O-Bon Services will be held in the temple. Ministers will do sutra chanting and when all the chanting is finished, the ministers will read the 5 Betsuin honored deceased groups (named above), then continue with all Hatsubon sponsors' names at the Hatsubon Service to be held on **Friday, August 20 at 10 am** (see **Zoom link on page 1 for Hatsubon Service and all other O-Bon services**).

At all other 4 virtual O-Bon Services, after the ministers sutra chanting ends and the 5 Betsuin groups are named, then the following Otaba sponsors' names will be called:

Friday, Aug 20 at 6 pm - Otaba Sponsors **from A to Kagawa** will be called.

Sat, Aug 21 at 10 am—Otaba Sponsors from **Kajioka to Najita** will be called.

Sat, Aug 21 at 6 pm—Otaba Sponsors from **Nakagawa to Tamashiro** will be called.

Sun, Aug 22 at 10 am—Otaba Sponsors from **Tamura to Zhong** will be called.

and **then ALL Chutoba Sponsors** will be called.

At the end of each service, the ministers will go down to the Social Hall and go through each row of O-Tobas for the final blessing of that service.

IN PERSON O-TOBA SERVICES will be held in the temple from August 9 to 19 (weekdays from 10 to 1 pm and 3 pm to 6 pm and weekends 10 to 6 pm). **Please call Jodo Mission office at 949-3995, if you wish to schedule a private O-Toba service.** Your O-Toba will be brought to the temple and will be displayed during your private O-Toba service and will be returned to the social hall.

Each private O-Toba service is limited to 25 or less persons, everyone wears a facial mask with social distance of 3 feet and temperature checks will be taken. Services are scheduled one hour apart so that we will be able to sanitize between services and take temperatures. **When making your appointment, please indicate if the elevator is needed. Elevator is located in the back near iko Hall, on the seaside of the temple building.** Elevator will bring people directly to the temple for your private O-Toba service.



Message by Bishop Kosen Ishikawa

Aloha Members and Friends of Jodo Mission,

Thank you very much for your continued support to our Jodo Mission. It was truly my honor and pleasure to meet many families during services in June when Rev. Takano had to return to Japan for his visa issue. He came back safely with renewed I-94 and I am back on Kauai to conduct O-Bon, rummage sale and prepare my family's moving to Oahu. It is my hope I could see many more members and friends in person in the future.



When I used to work at Betsuin from 1997 to 1999, there were 840 members and our mailing list of bulletin was nearly 2K. There were many more services and ministers oversaw more jobs such as answering phones and some office work including editing and shipping Bulletin. At that time, there were no air conditioners at both office and Hondo. Because of the constant noise from the freeway traffic, we couldn't open the windows and it was not so comfortable to do daily jobs in the heat. One of the projects I was engaged under the leadership of the late Rev. Narashiba was to input our members' family records called "Kakocho" onto the computer. Day after day, whenever I had time, I kept inputting families' information both in Japanese and in English into computer. Of course, it was not so fun to do this routine, but later I found myself typing so fast and knew many names of our members thanks to this job. Indeed, I was glad to know this database made our jobs easier and efficient for everybody.

Therefore, while staying at Betsuin for 3 weeks in June, I felt nothing but blessed and grateful to work and conduct services because we have now air conditioners everywhere and we have hard working staffs. Especially I realized, as you know, Ms. Sally Hayashi kept working at the office from morning till night without taking rest and days-off and do almost everything except services. With such a blessed working condition, it is my belief that we ministers could visit more members and care homes in the future. At the same time, we'd like you to consider joining in our membership so that we can expand our services in the future.

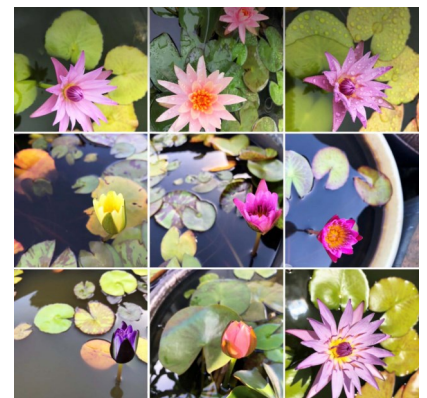
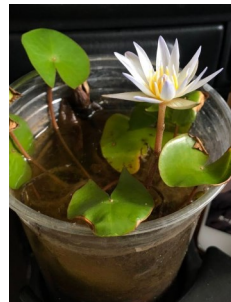
To my surprise, our annual membership dues remain the same at \$60 per year for several decades while all other prices went up. \$60 per year means \$5 per month or just a 16 cents per day! I'm sorry to ask you again and again but please join in our membership and come to our services if you haven't done so yet.

Lastly, please stay safe and I wish you and your family to have a very happy O-Bon!

Gassho,

Bishop Kosen Ishikawa

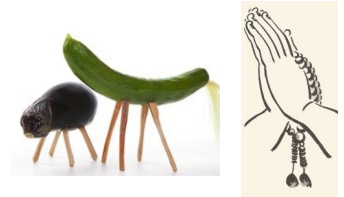
Water Lily Plants: Those who received water lily plants from Bishop Ishikawa—how are they doing? Are they still doing fine or do you now have them in larger containers?



More Information About O-Bon

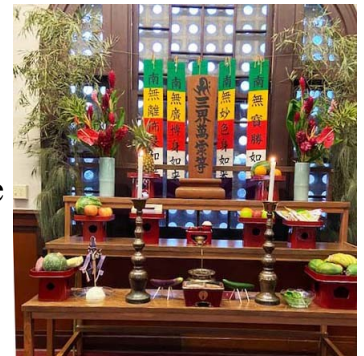
No Potted Mums Will Be Sold: Due to Coronavirus and lack of manpower, Sr. YBA decided not to sell potted mums. Maybe next year!

What Can You Do Since O-Bon Services Are Virtual? You can still do offerings at home at your Butsudan, including the **offerings of cucumber and eggplant**. Get a chopstick to make 4 legs and attach to cucumber and eggplant symbolizing a cucumber horse for coming to this world fast and eggplant cow for the slow return back to the Pure Land and see you again next year!



You can also visit the graveyard and honor your ancestors by cleaning the gravesite and make it ready for their return for O-Bon. Place a little chochin to welcome them back. Also some nice flowers would make them happy. You can also prepare their favorite foods and place them before the Butsudan.

Segaki-dan and Shoryodana: **Segaki-dan** is a special altar decorated with banners listing the Buddhas of the Five Directions (East, South, West, North, and Center) which is displayed at O-Bon time at the entrance to the Hondo on the second floor of the temple building. The officiant minister during the O-Bon service will go to the Segaki-dan and offer wonderful foods to the hungry spirits. Normally the hungry spirits do not eat anything, but at O-Bon during the Segaki service, they enjoy delicious foods.



Shoryodana is displayed in the Social Hall where all the O-Tobas are displayed and it welcomes all our beloved ones and ancestral spirits with water, rice, fruits and delicious meals which are offered at the Shoryodana.

This year at the O-Bon Services we will have the Segaki-dan at the entrance to the temple and Shoryodana in the Social Hall. Please look for them while viewing the virtual O-Bon Services.

Volunteers Needed:

Otoba set up day & temple cleaning on Sunday, August 8 at 9 am. We can use your help —either helping put up Otobas or helping clean and polish metal pieces in the altar.

Otoba take down or kuzushi on Sunday, August 22 after the 10 am final O-Bon Service. We can use all your help to take down all the Otobas and store them for next year. Thank you

Offerings of Rice, Donations and Membership can be mailed to **Jodo Mission of Hawaii, 1429 Makiki Street, Honolulu, HI 96814**. During O-Bon, it is customary to offer a bag of rice. However, monetary donations in lieu of rice are acceptable. Donations are welcome and if you did not pay your membership or niche maintenance, please do so.

Hawaii Jodo Shu Rengo :Fujinkai Scholarship Award

Hawaii Jodo Shu Rengo Fujinkai (or Hawaii State Fujinkai) President Iris Nitta recently announced two Betsuin recipients of the 2021 Namiye Nakamura Scholarship. The two recipients are **A'Marie M.S. Paraso and Kody M. Kikuno**. Congratulations to both of you.

A'Marie M.S. Paraso is the daughter of Ethan and Hitomi Paraso and graduated as a Valedictorian at Moanalua High School in 2021. She participated in the Marching Band, Symphonic Wind Ensemble, Concert Orchestra and Concert Band. She also participated in other extracurricular activities such as the Japanese Club, Science Club and school Math Team. She also volunteered with community clean up activities through OSPCA and 808 Cleanups.



At Betsuin, she participated in activities of the Sunday School and Jr. YBA, as well as other church activities like Bon Dance and Mochi Making. This photo was taken when she participated with other Sunday School students in the New Year Calligraphy Resolution in kanji in early 2020.

A'Marie is planning to attend the University of Hawaii at Manoa majoring in Chemistry and is interested in the medical field, specifically to become a Pharmacist.

Kody M. Kikuno is our other recipient. He is the son of Barry and Wendy Kikuno. He also graduated from Moanalua High School in 2021 and will be attending Purdue University this fall majoring in Mechanical Engineering;



Kody was also active in the Moanalua music program—Marching Band, Concert Band, Symphonic Orchestra, Symphonic Wind Ensemble, Saxophone Section Leader and served as Equipment Manager. His outside music activities include he Hawaii Youth Symphony and the Pacific Music Institute. Kody is also an athlete, participating in the Junior Golf Association program and is a member of the Moanalua High School Varsity Golf team,.

Kody comes from the Kitajima family with a long history of Jodo Shu starting with great-grandfather, Shoyu Kitajima, who served as minister of Kapaa Jodo Mission and his grandmother, Marian Kitajima who was very active with Betsuin's Sunday School. His grandfather Masa Kitajima is well known for his history with the Betsuin. [The photo of Kody is from 2016. Hopefully, at the scholarship presentation, we can get a more updated photo.]

Congratulations to A'Marie and Kody and we wish you both the best of your endeavors. These young students are the next generation in the Jodo Shu movement!



Consecration Service— On July 4th, Rev. Takano performed the consecration service of putting the sole into the new Buddha statute. The Buddha statue on the far right was found in our basement when Rev. Takano did the cleaning in 2019. Rev. Takano mentioned how wonderful that the Sr. YBA was able to do this twice for the Betsuin. [The previous Buddha statue now is in the front Nokotsudo.] The new Buddha is anew again and sits to the right of Amida Buddha in the altar! This new Buddha statue will sit in the social hall where all our Otobas will be displayed. ARIGATO SR. YBA!!



What is "Perpetual Memorial Service?" (Eitaikyo)

This record of a perpetual memorial service and is called Eitaikyo in Japanese. When the date of death occurs for a person listed on this record, the ministers pray for that individual during the morning service. The prayers will continue each year for as long as Jodo Mission exists.

Anyone can be included in it. You may put your own name on the list, too. This also helps when it is difficult to have memorial services. We also welcome you to attend the morning service at 9:30am. [Note: Time may change due to Covid-19 schedule. Please call if you plan to attend.]

How to apply

Stop by the office, and fill out the application form. Each name costs \$200. After the application is accepted, the name will be listed on the record.

Notice to Nokotsudo Visitors

(Sometimes referred to as the **Niche** rooms)

Many people call to see if the Nokotsudo/Columbarium (or sometimes known as Niche rooms) are open. We have been letting people in if you come and ring the blue bell. **You must wear a mask, use the hand sanitizer going in and coming out and go home and wash your hands with soap.** No more than 4 people at a time, with social distancing.

New Hours: 10 am to 5 pm Mon to Sat
12 pm to 3 pm Sunday*
10 am to 3 pm Holidays

*Sundays no one in office since we have Sunday Service

2021 Memorial Years Observed	
1 st year	2020
3 rd year	2019
7 th year	2015
13 th year	2009
17 th year	2005
23 rd year	1999
25 th year	1997
27 th year	1995
33 rd year	1989
37 th year	1985
43 rd year	1979
47 th year	1975
50 th year	1972
100 th year	1922

Email Monthly Bulletin—Please advise if you wish to have your monthly bulletin via email instead of U.S. mail. **Please also keep Jodo Mission advised of your current address & phone number.**

Mail forwarded adds additional costs. Thank you for your cooperation.

REMINDERS

Gojikai or Membership—\$60.00 per year

Persons of the same family but living separately should have their own membership

Niche owners should continue your Membership or Gojikai each year **\$60.00**

AND

Maintenance fee \$5.00 per year per niche

お知らせ

1年間における護持会費、又はメンバーシップは60ドルになります。同世帯の家族。世帯が別の場合は個々にメンバーシップが必要です。

納骨堂を所有の方は別途、5ドルの年間管理費をお納めください

Jodo Mission Office Hours:

[New Covid Hours]

Monday to Saturday 10am—5pm
Sunday & Holidays 10am—3pm

Phone: 949-3995
Website: www.jodo.us



Bishop Kosen Ishikawa



Rev. Myoko Takano
Resident Minister

EITAIKYO (Perpetual Memorial Service) for August

- | | | | |
|---|---|--|---|
| <p>1 Cordelia Reiko Ushiroda</p> <p>2 Sato Hirouji
The Miyamasu & Hirouji Family
Tadashi Nakamura
The Nakamura Family
Janet Hiromi Okawa</p> <p>3 Satsu Hashimoto
The Hashimoto Family</p> <p>4 Tsuru Nomura
The Nomura Family
Sumako Iguchi
Kenkichi Kimoto
Keisuke Masuda
Masaichi Harada</p> <p>5 Tori Matsubara
The Matsubara Family
Tahei Higashimura
The Higashimura Family
Mantaro Nitta
Toichiro Tomita
Thomas Yutaka Kubota
Yaeko Muranaka
Herbert Kiichi Tanaka</p> <p>6 Toshiko Nishimura
Yoshio Fujii
Grace Kiyoko Sadaoka</p> <p>7 Kametaro Yano (2)
The Yano, Konaka & Hayashi Family
The Yano Family
Chokichi Tanaka
The Tanaka Family
Aiko Fukuhara
The Inoue Family
Kikuno Yamane
Kaneichi Kato
Uno Iba</p> <p>8 Takao Tsuda
Kitae Yamanaka
The Yamanaka Family
Zentoku Takara
Kame Taira
Russell Hideo Uehara</p> <p>9 Takeo Sato
The Sato & Suzuki Family
Hiro Yonemoto
The Yonemoto Family
Tora Higashi
The Higashi Family
The Hashimoto Baby
Evelyn Kam Murakami</p> <p>10 Seitaro Yamamoto
The Yamamoto & Suzuki Family
Takaji Shigeoka
Kinichi Imai
Saburo Nishimura
Ito Fujita
The Fujita Family
Hideo Yamagata</p> | <p>Aileen Fukunaga</p> <p>11 Tomegusu Kotake
Kuranoshin Matsumoto
Thomas Yoshiaki Shimizu</p> <p>12 Hatsuichi Karimoto
Toshiko Elsie Otani</p> <p>13 Doris Kiyoko Miura
Toshio Kouchi
Hisashi Okamoto</p> <p>14 Ashizuchi Fujikami
The Fujikami Family
Shizuo Yokomichi
The Yokomichi & Kondo Family
Ichi Yanagihara
Yoshijiro Iwamoto
Shizuno Muraoka
Satoshi Muraoka</p> <p>15 Maki Hara
The Hara Family
Bishop Shoshin Inouye
The Nose Family
Sata Nitta
Torano Toyoshiba
Noboru Hamamura
Hatsue Yamada Watanabe
Robert Tokusei Kaneshiro</p> <p>16 Masao Mizuno
The Mizuno & Ohta Family
Ume Miyamasu
The Miyamasu Family
The Masaki Family
Yoneo Masuda
The Masuda Family</p> <p>17 Toshikata Shinagawa
David Kenji Moritsugu
Kiyoji Yamamoto
Kazuyo Furukawa</p> <p>18 Mitsuru Morisako
The Morisako & Ishii Family
Shinsuke Mito
The Mito Family
Fuji Yasumoto
Hanayo Imai
Miyuki Ono
Toraichi Kurakake
Rev. Ryokai Yamanaka
Ruysuke Machida
Haruo Okuhara</p> <p>19 Eiko Maeda
The Maeda Family
Kiyoshi Hisamura
Hisano Oyabu
The Oyabu & Kondo Family
The Wakichi Suzui Family
Takeshi Umetsu
Sakae Matsumoto</p> <p>20 Shizue Iwamoto</p> | <p>Henry Sueo Hashimoto
Kame Namihiro
Jean Chie Nakagawa
Wataru Muramoto
Kazue Kasashima Morimoto</p> <p>21 Yoshisuke Sato
The Sato & Suzuki Family
Yutaka Teshima
The Teshima Family
Saka Kuniyuki
Morishige Inage
Misao Kuniyuki
Yoshi Nishimura
Richard Toshiyuki Ogawa
Toraichi Kurakake
Ryan Rikio Awaya</p> <p>22 Yuri Hironaka
The Hironaka & Ishimoto Family
Masuichi Tabata
Miyoko Hokushin
Takenouchi</p> <p>23 Keisuke Masuda
Raymond Tetsuji
Nishiyama
Matsuyo Sakuda
Tsutoe Taira</p> <p>24 Kazuo Kano
The Kano & Wataba Family
Teisuke Hamamoto
The Hamamoto Family
Eizo Fukuda
Tatsuki Heirakuji
Sueko Onaga (2)
Francis Aihara
Suma Iwakawa</p> <p>25 Tema Iuchi
The Iuchi Family
Kiku Masuda
The Masuda & Asamura Family
Etsuko Ohta
The Ohta Family
Koji Yasumoto
Gladys Otsui Ikeda</p> <p>26 Tadasuke Nishida
Masaji Ishida
Umeno Masuda
Torao Maehara
Yachiyo Tamura</p> <p>27 Harumi Tasaka
Shigeo Kobashigawa
The Kobashigawa Family
Kenji Kawano</p> <p>28 Hitoshi Mizuno
The Mizuno & Ohta Family
Seikuro Hisamura
Shichiemon Ebisuzaki (2)
Hana Noyama</p> <p>29 Tadashi Higashi</p> | <p>The Higashi Family
Kenji Hamada
The Hamada Family
Atsushi Fujita
The Fujita Family
Masahiko Miyagi
Namiko Teraoka</p> <p>30 Thomas Takeshi Tanaka
Elsie Kikuye Tatei
Katsumi Nishimoto
Sojiro Takamura
Rikiichi Yagi</p> <p>31 Toshiyasu Misawa (2)
The Misawa & Watanabe Family
The Misawa Family
Akira Misawa
Riyo Yano
Edith Kiyoko Kaneshiro</p> |
|---|---|--|---|

Obituaries

The Jodo Mission of Hawaii extends its sincere condolences to the family members and loved ones of the following members who have recently left this world for the Pure Land.

Richard Yoshio Kotaka, Sr.	92
Jan Michie Mori	64
Ruth Kunie Oishi	100

August 2021

9:30am Morning Service Everyday

Note: Time may change due to

COVID-19 Schedule

Jodo Mission of Hawaii

Phone: 949-3995

Website: www.jodo.us

Sun	Mon	Tue	Wed	Thu	Fri	Sat
1 10:00 Sunday Service	2	3	4	5	6	7
8 NOSUNDAY SERVICE 9:00 Otoba Set Up and Temple Cleaning	9 ↓	10 Private Services Aug 9 to 19	11	12	13	14
15 NO SUNDAY SERVICE Private Services Aug 9 to 19 ↓	16	17	18	19	20	21
22 NO SUNDAY SERVICE 10:00 Final Virtual OBon Service Then Take Otobas Down	23	24	25	26	27	28
29 10:00 Sunday Service	30	31	Jodo Shu Calendar for August 2021: When you reunite with a loved one, it gives your heart a boost			

Coming Events:

Sept 8 Deadline for Chutoba Order
Sept 12 @ 10am Autumn Higan Service
Sept 18 @ 8-11 Virtual Kyoku Convention
Oct 10 Bazaar Set Up Day (if we have Bazaar) ??
Oct 17 Jodo Mission Bazaar or other fundraiser??
Dec 19 Mochitsuki—Mochi Making

**NO MEETINGS OR CLASSES in August for Fujinkai, YBA,
Sewing Circle and Sunday School.**

Bazaar Donations will NOT BE accepted temporarily.

Thank you for your cooperation and understanding

Membership Dues (Gojikai) REMINDER: If you have not paid your membership dues (\$60) this year, please be sure to do so by making your check payable to **Jodo Mission of Hawaii** (mail to 1429 Makiki Street, Honolulu, HI 96814). *Thank you.*